


Service Layer Credits: Source: Esri, DigitalGlobe, GeoEye, Earthstar Geographics, CNES/Airbus DS, USDA, USGS, AeroGRID, IGN, and the GIS User Community

**Legend**

- Reach Extent

**Combined Suitability Index**

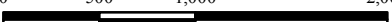
- 0.75 - 1
- 0.5 - 0.75
- 0.25 - 0.5
- 0 - 0.25
- 0



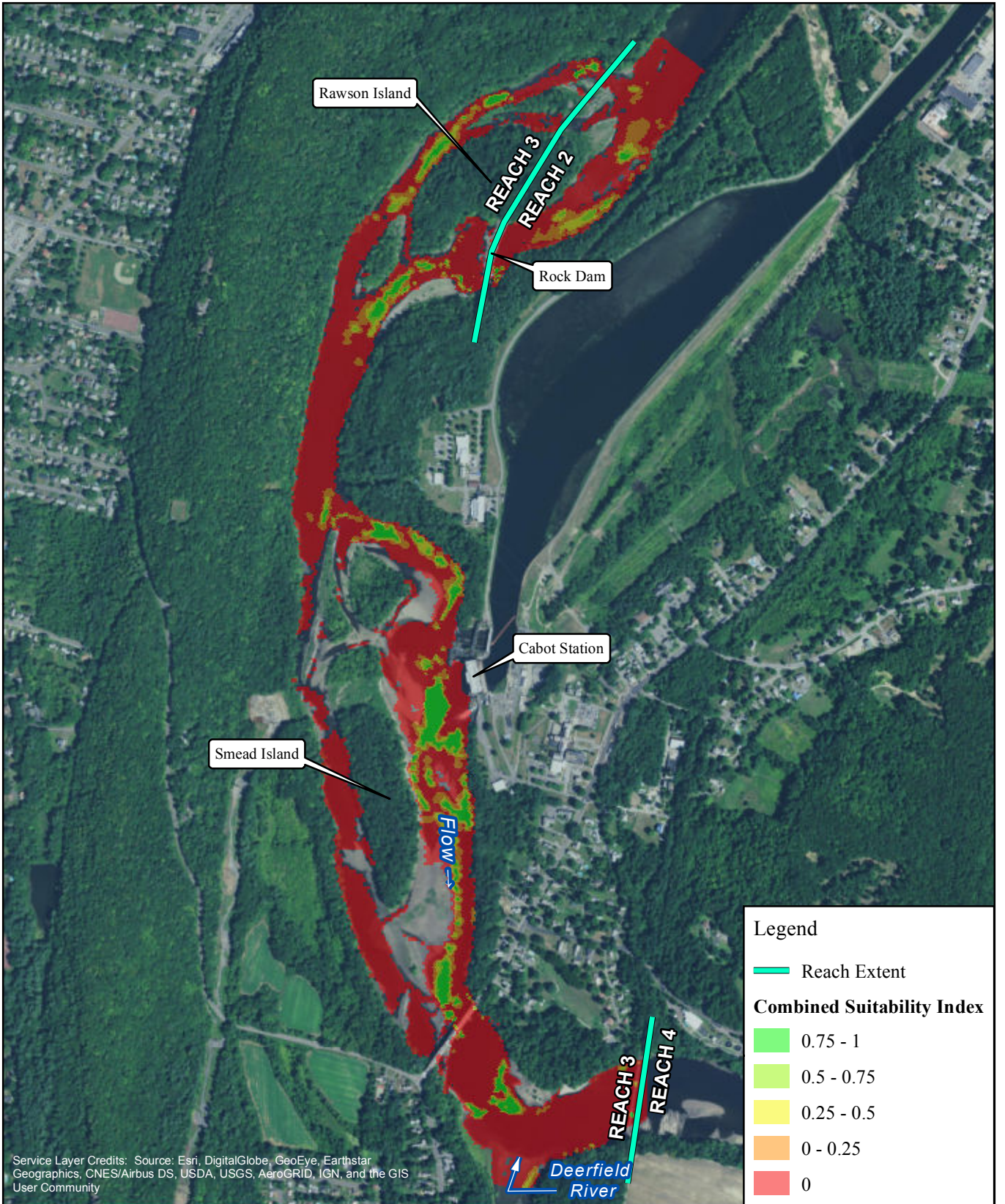
**FIRSTLIGHT HYDRO GENERATING COMPANY**  
 Northfield Mountain Pumped Storage Project No. 2485  
 Turners Falls Hydroelectric Project No. 1889  
**RELICENSING STUDY 3.3.1**

**Deep-Fast Guild-**  
 Cabot Flow: 2500 cfs  
 Bypass Flow: 200 cfs  
 Deerfield Flow: 200 cfs

0 500 1,000 2,000 Feet



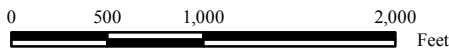
Copyright © 2017 FirstLight Power Resources All rights reserved.



Service Layer Credits: Source: Esri, DigitalGlobe, GeoEye, Earthstar Geographics, CNES/Airbus DS, USDA, USGS, AeroGRID, IGN, and the GIS User Community

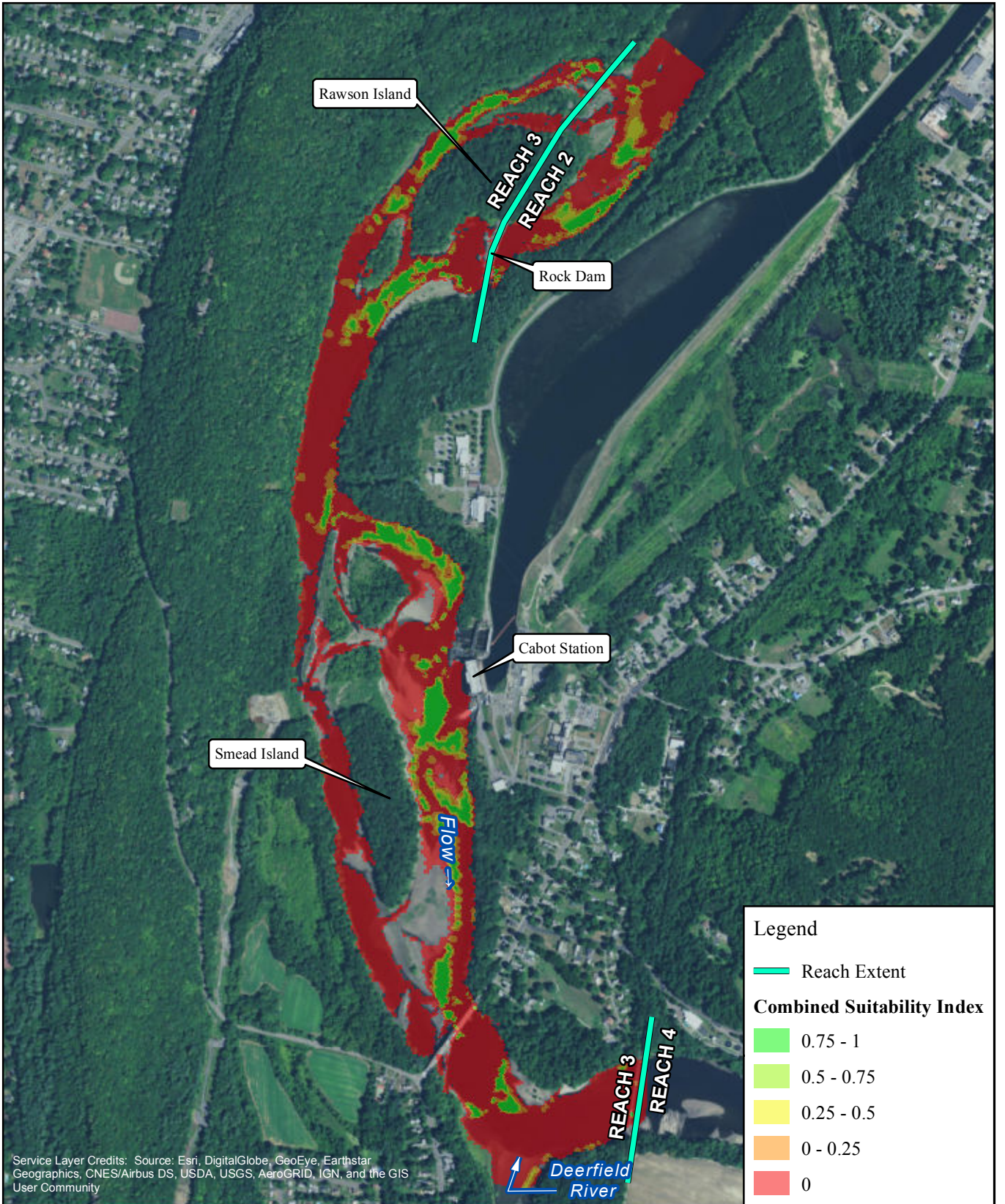


FIRSTLIGHT HYDRO GENERATING COMPANY  
 Northfield Mountain Pumped Storage Project No. 2485  
 Turners Falls Hydroelectric Project No. 1889  
 RELICENSING STUDY 3.3.1



Deep-Fast Guild-  
 Cabot Flow: 2500 cfs  
 Bypass Flow: 500 cfs  
 Deerfield Flow: 200 cfs

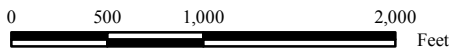
Copyright © 2017 FirstLight Power Resources All rights reserved.



Service Layer Credits: Source: Esri, DigitalGlobe, GeoEye, Earthstar Geographics, CNES/Airbus DS, USDA, USGS, AeroGRID, IGN, and the GIS User Community

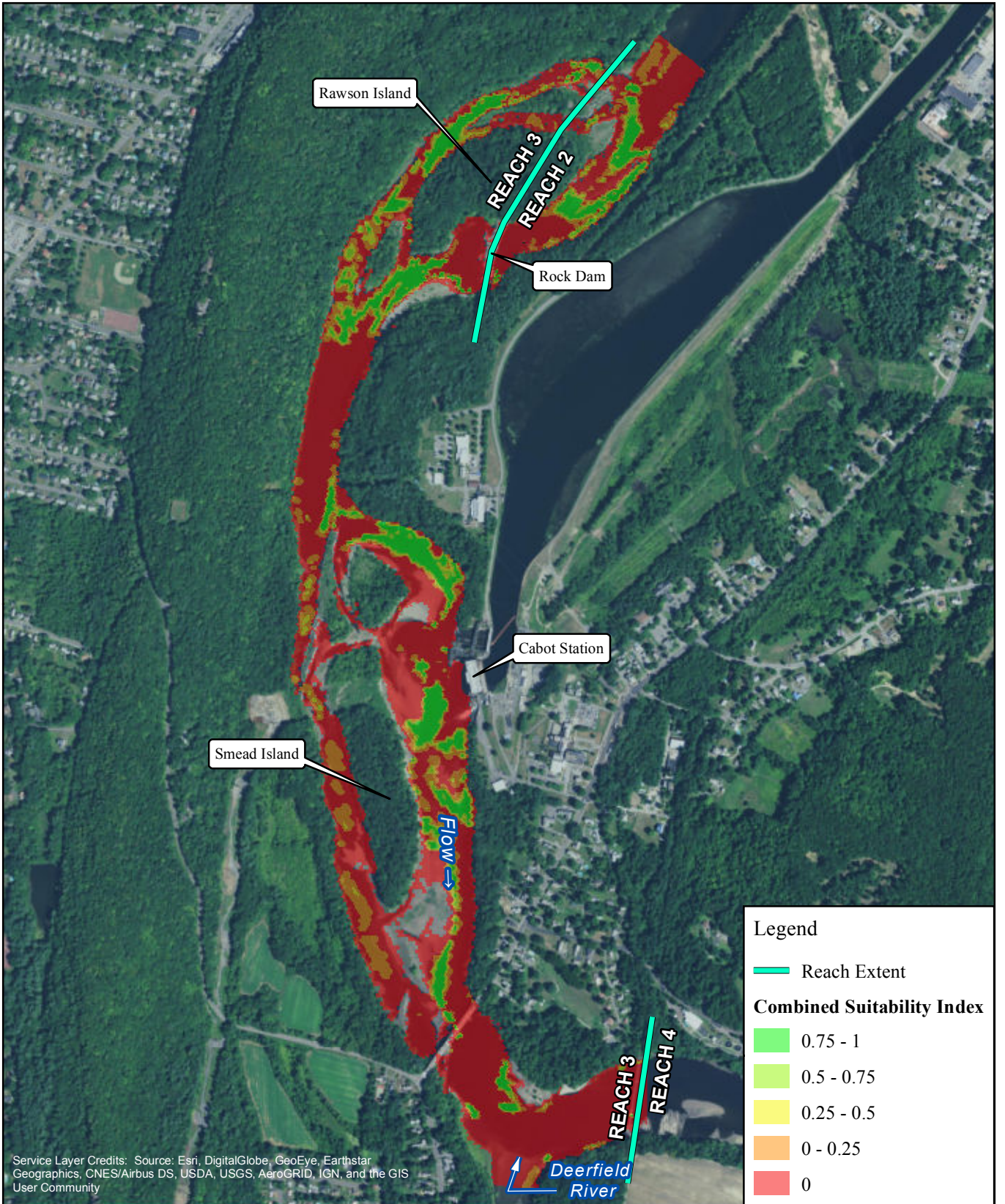


FIRSTLIGHT HYDRO GENERATING COMPANY  
 Northfield Mountain Pumped Storage Project No. 2485  
 Turners Falls Hydroelectric Project No. 1889  
 RELICENSING STUDY 3.3.1



Deep-Fast Guild-  
 Cabot Flow: 2500 cfs  
 Bypass Flow: 1000 cfs  
 Deerfield Flow: 200 cfs

Copyright © 2017 FirstLight Power Resources All rights reserved.



Service Layer Credits: Source: Esri, DigitalGlobe, GeoEye, Earthstar Geographics, CNES/Airbus DS, USDA, USGS, AeroGRID, IGN, and the GIS User Community

**Legend**

- Reach Extent

**Combined Suitability Index**

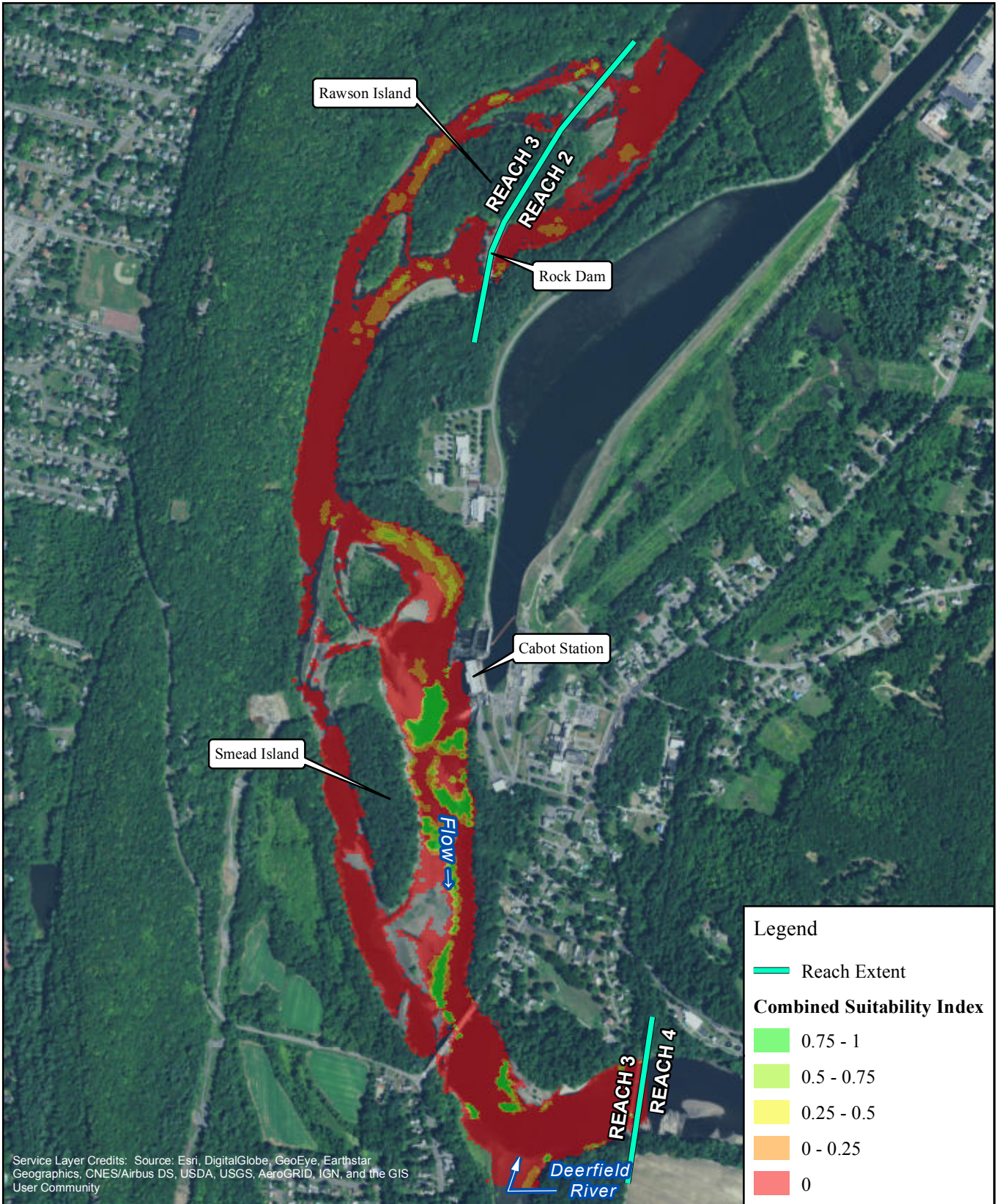
- 0.75 - 1
- 0.5 - 0.75
- 0.25 - 0.5
- 0 - 0.25
- 0

FIRSTLIGHT HYDRO GENERATING COMPANY  
 Northfield Mountain Pumped Storage Project No. 2485  
 Turners Falls Hydroelectric Project No. 1889  
**RELICENSING STUDY 3.3.1**

Deep-Fast Guild-  
 Cabot Flow: 2500 cfs  
 Bypass Flow: 2000 cfs  
 Deerfield Flow: 200 cfs

0 500 1,000 2,000 Feet

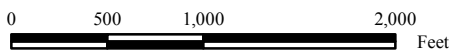
Copyright © 2017 FirstLight Power Resources All rights reserved.



Service Layer Credits: Source: Esri, DigitalGlobe, GeoEye, Earthstar Geographics, CNES/Airbus DS, USDA, USGS, AeroGRID, IGN, and the GIS User Community



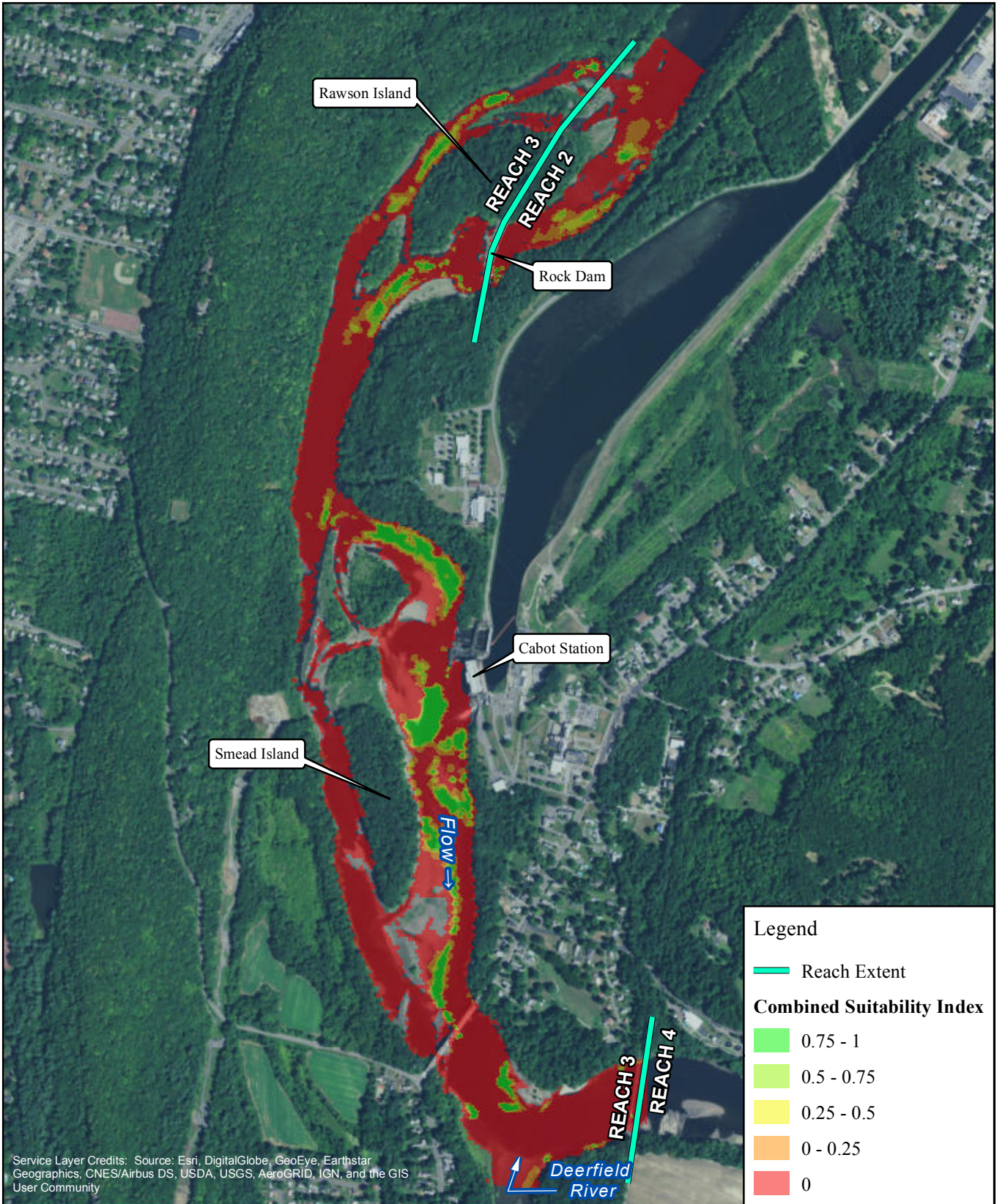
FIRSTLIGHT HYDRO GENERATING COMPANY  
 Northfield Mountain Pumped Storage Project No. 2485  
 Turners Falls Hydroelectric Project No. 1889  
 RELICENSING STUDY 3.3.1



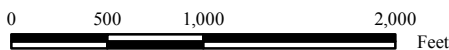
Legend	
	Reach Extent
Combined Suitability Index	
	0.75 - 1
	0.5 - 0.75
	0.25 - 0.5
	0 - 0.25
	0

Deep-Fast Guild-  
 Cabot Flow: 4500 cfs  
 Bypass Flow: 200 cfs  
 Deerfield Flow: 200 cfs

Copyright © 2017 FirstLight Power Resources All rights reserved.

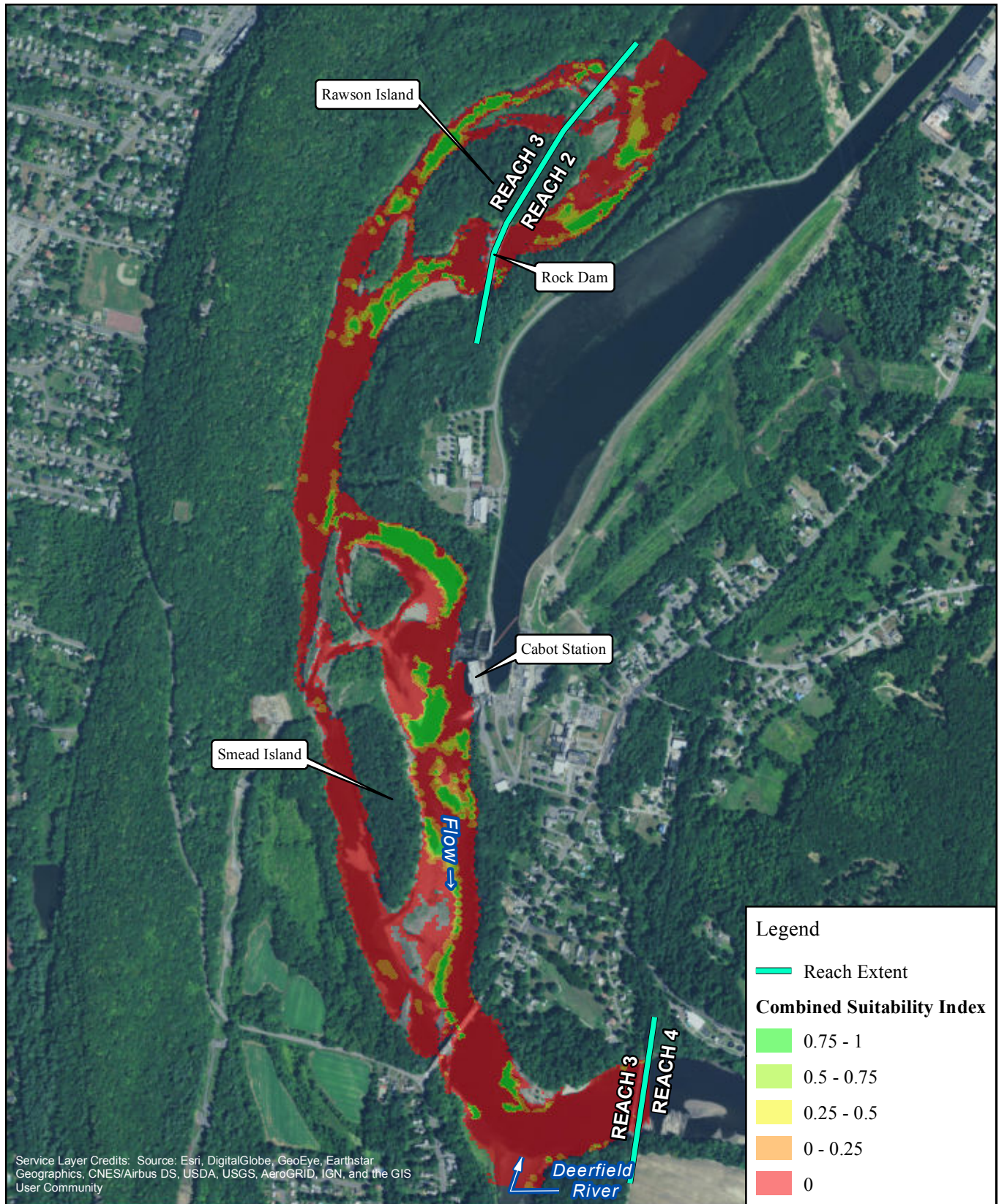


FIRSTLIGHT HYDRO GENERATING COMPANY  
 Northfield Mountain Pumped Storage Project No. 2485  
 Turners Falls Hydroelectric Project No. 1889  
 RELICENSING STUDY 3.3.1

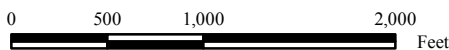


Deep-Fast Guild-  
 Cabot Flow: 4500 cfs  
 Bypass Flow: 500 cfs  
 Deerfield Flow: 200 cfs

Copyright © 2017 FirstLight Power Resources All rights reserved.

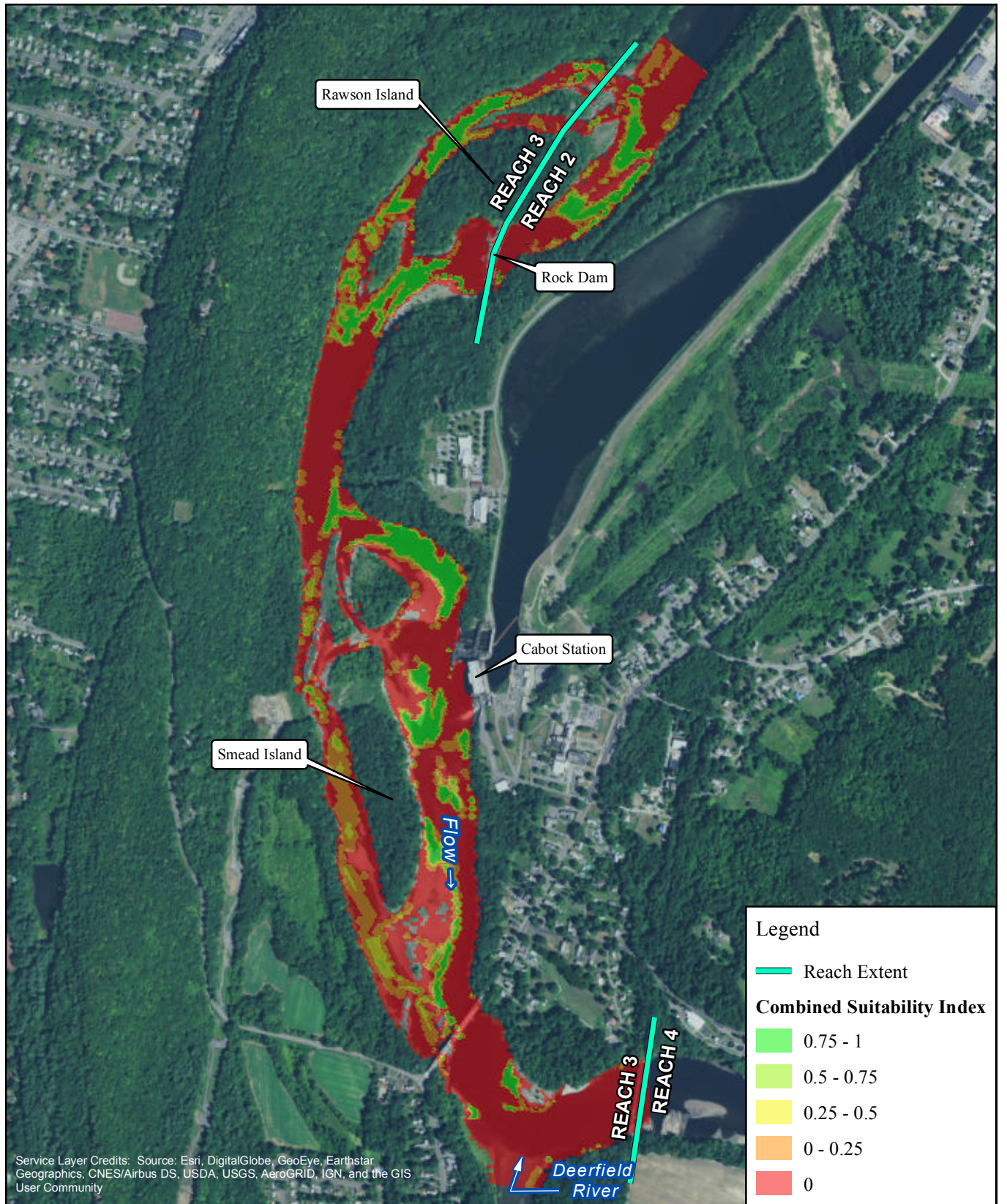


FIRSTLIGHT HYDRO GENERATING COMPANY  
 Northfield Mountain Pumped Storage Project No. 2485  
 Turners Falls Hydroelectric Project No. 1889  
 RELICENSING STUDY 3.3.1

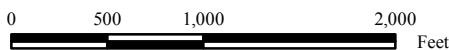


Deep-Fast Guild-  
 Cabot Flow: 4500 cfs  
 Bypass Flow: 1000 cfs  
 Deerfield Flow: 200 cfs

Copyright © 2017 FirstLight Power Resources All rights reserved.



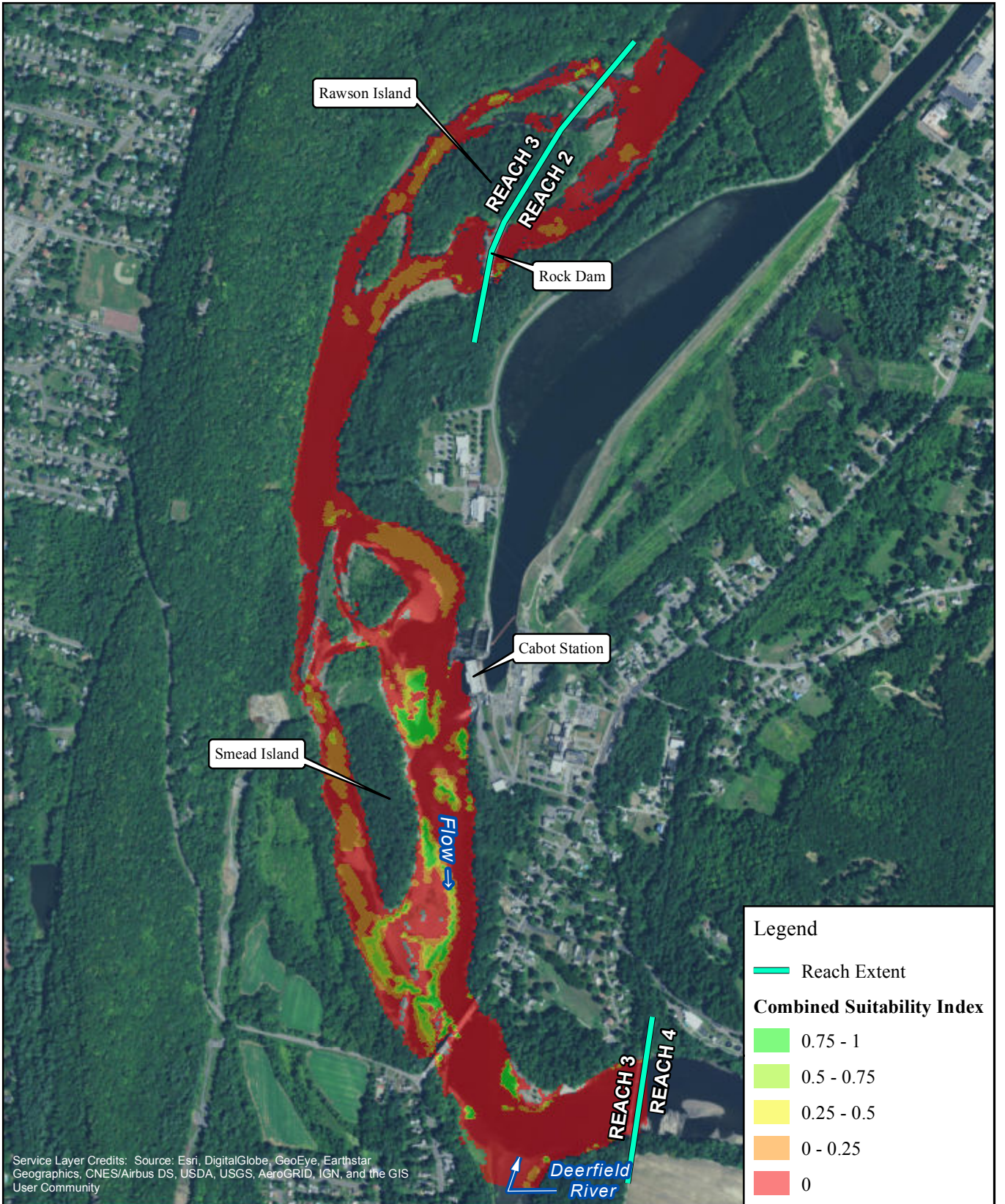
FIRSTLIGHT HYDRO GENERATING COMPANY  
 Northfield Mountain Pumped Storage Project No. 2485  
 Turners Falls Hydroelectric Project No. 1889  
**RELICENSING STUDY 3.3.1**



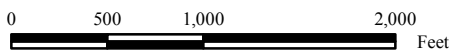
Deep-Fast Guild-  
 Cabot Flow: 4500 cfs  
 Bypass Flow: 2000 cfs  
 Deerfield Flow: 200 cfs

Copyright © 2017 FirstLight Power Resources All rights reserved.



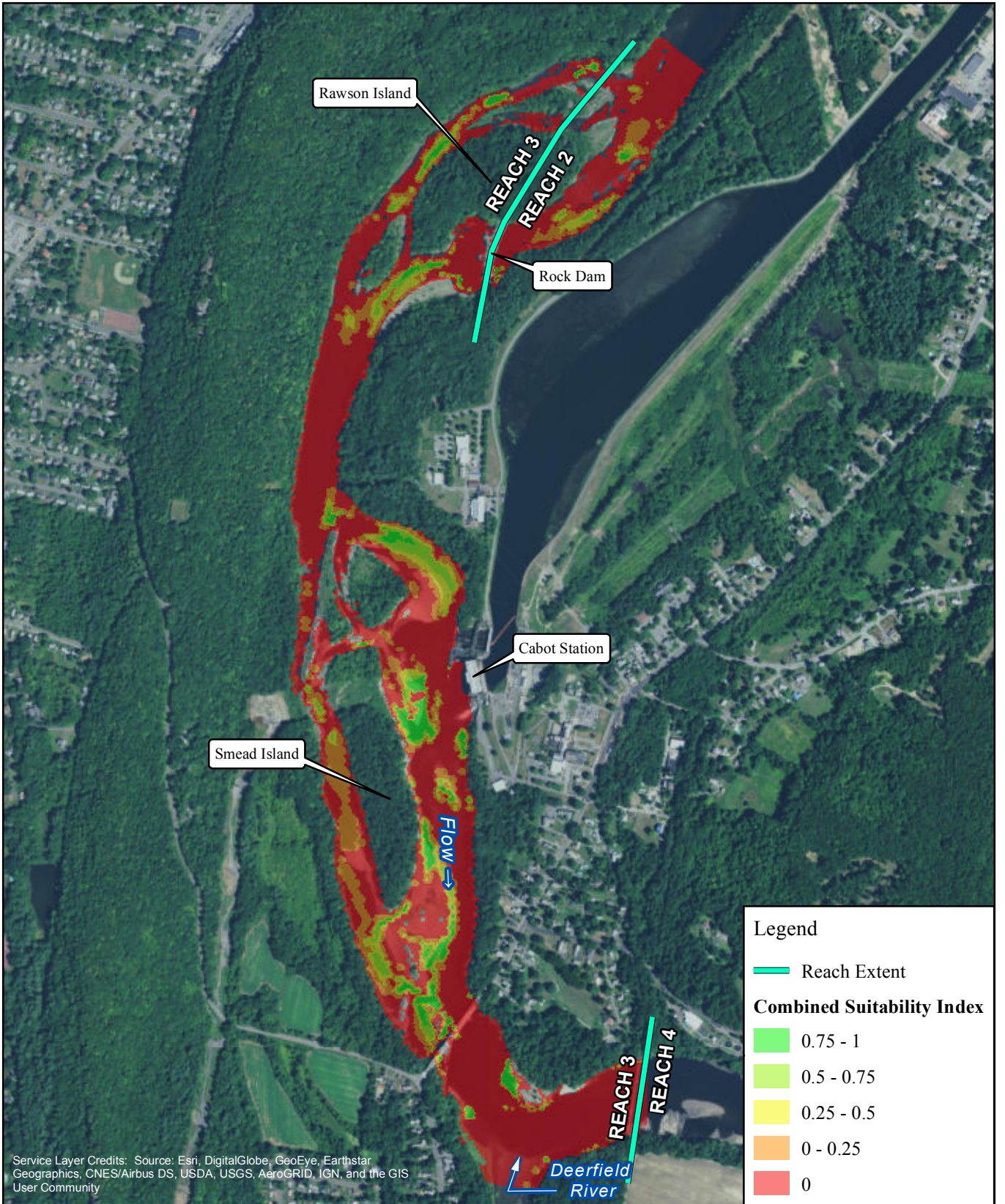


FIRSTLIGHT HYDRO GENERATING COMPANY  
 Northfield Mountain Pumped Storage Project No. 2485  
 Turners Falls Hydroelectric Project No. 1889  
 RELICENSING STUDY 3.3.1

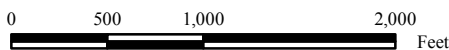


Deep-Fast Guild-  
 Cabot Flow: 7000 cfs  
 Bypass Flow: 200 cfs  
 Deerfield Flow: 200 cfs

Copyright © 2017 FirstLight Power Resources All rights reserved.

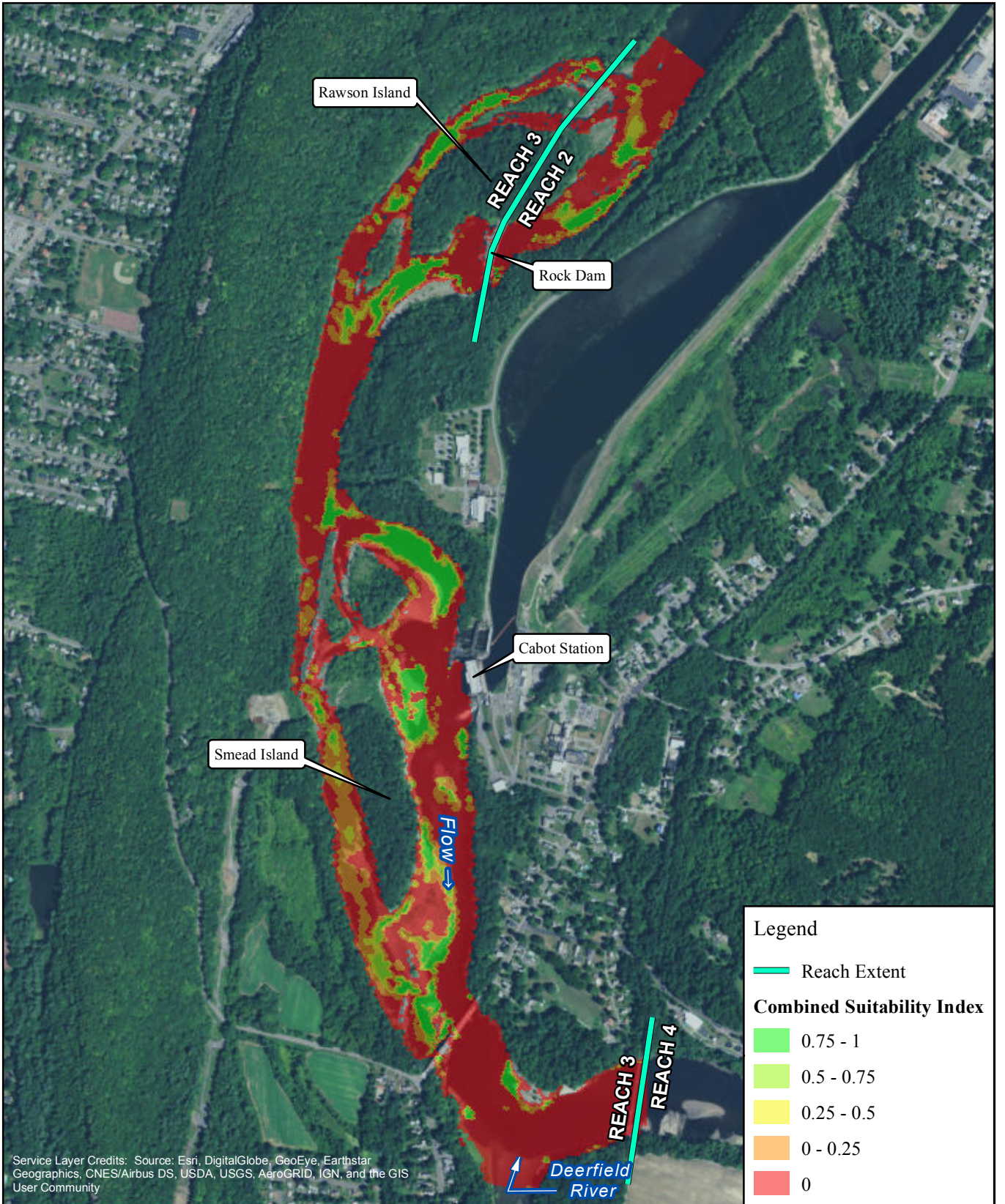


FIRSTLIGHT HYDRO GENERATING COMPANY  
 Northfield Mountain Pumped Storage Project No. 2485  
 Turners Falls Hydroelectric Project No. 1889  
 RELICENSING STUDY 3.3.1



Deep-Fast Guild-  
 Cabot Flow: 7000 cfs  
 Bypass Flow: 500 cfs  
 Deerfield Flow: 200 cfs

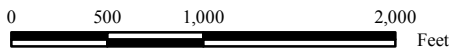
Copyright © 2017 FirstLight Power Resources All rights reserved.



Service Layer Credits: Source: Esri, DigitalGlobe, GeoEye, Earthstar Geographics, CNES/Airbus DS, USDA, USGS, AeroGRID, IGN, and the GIS User Community

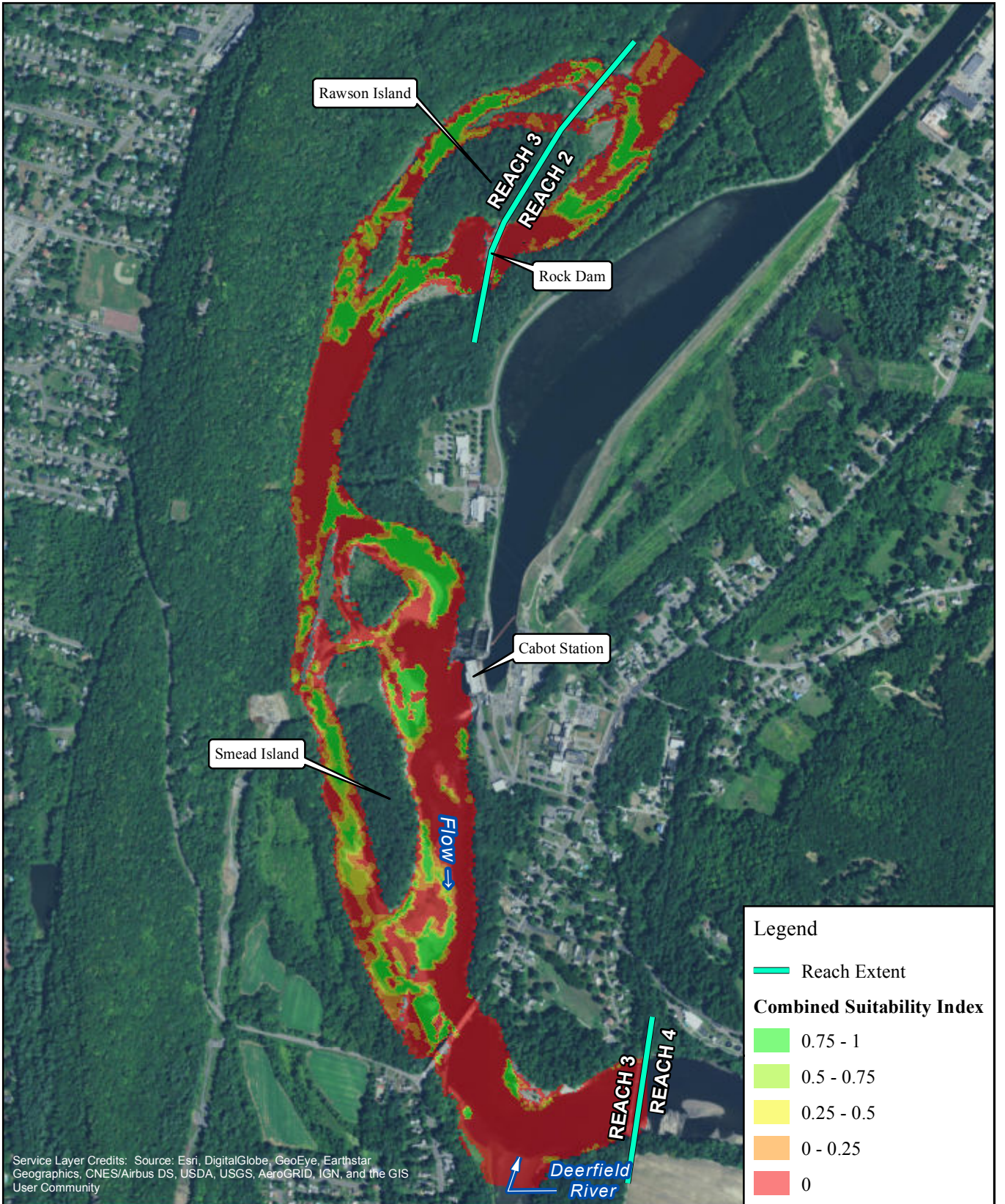


FIRSTLIGHT HYDRO GENERATING COMPANY  
 Northfield Mountain Pumped Storage Project No. 2485  
 Turners Falls Hydroelectric Project No. 1889  
 RELICENSING STUDY 3.3.1



Deep-Fast Guild-  
 Cabot Flow: 7000 cfs  
 Bypass Flow: 1000 cfs  
 Deerfield Flow: 200 cfs

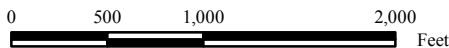
Copyright © 2017 FirstLight Power Resources All rights reserved.



Service Layer Credits: Source: Esri, DigitalGlobe, GeoEye, Earthstar Geographics, CNES/Airbus DS, USDA, USGS, AeroGRID, IGN, and the GIS User Community

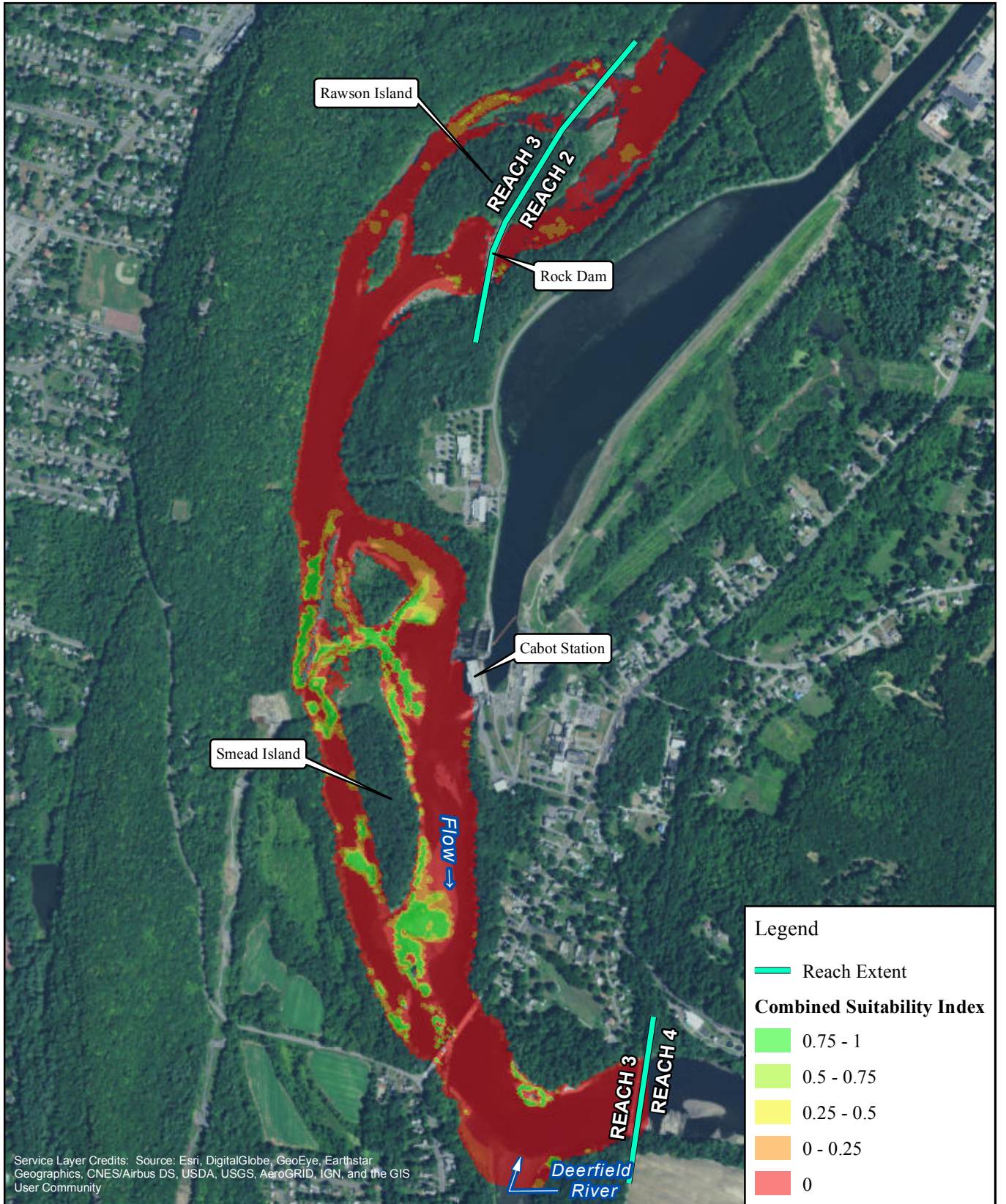


FIRSTLIGHT HYDRO GENERATING COMPANY  
 Northfield Mountain Pumped Storage Project No. 2485  
 Turners Falls Hydroelectric Project No. 1889  
**RELICENSING STUDY 3.3.1**

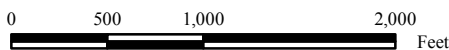


**Deep-Fast Guild-**  
 Cabot Flow: 7000 cfs  
 Bypass Flow: 2000 cfs  
 Deerfield Flow: 200 cfs

Copyright © 2017 FirstLight Power Resources All rights reserved.

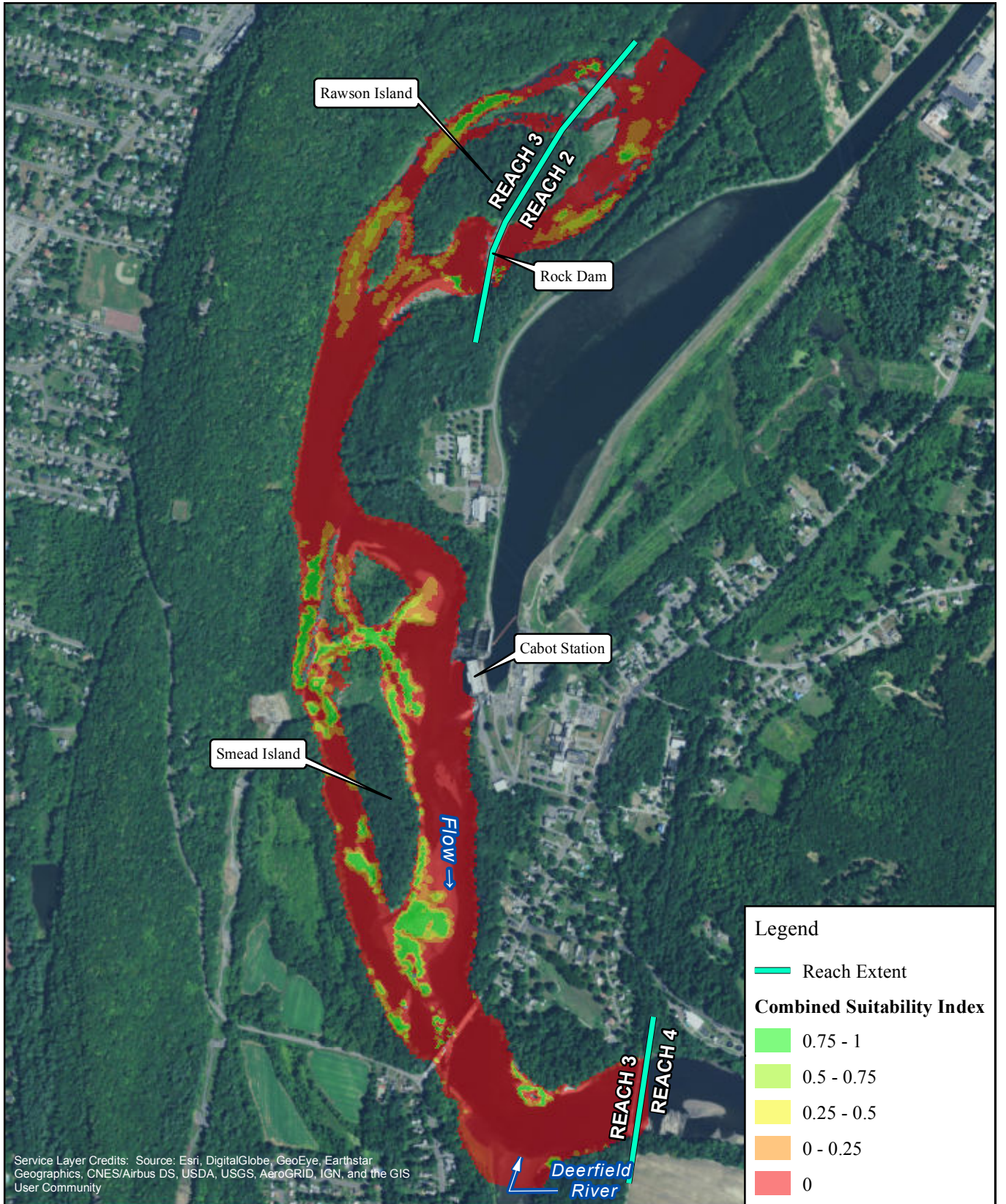


FIRSTLIGHT HYDRO GENERATING COMPANY  
 Northfield Mountain Pumped Storage Project No. 2485  
 Turners Falls Hydroelectric Project No. 1889  
 RELICENSING STUDY 3.3.1

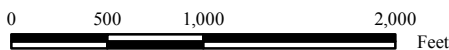


Deep-Fast Guild-  
 Cabot Flow: 14000 cfs  
 Bypass Flow: 200 cfs  
 Deerfield Flow: 200 cfs

Copyright © 2017 FirstLight Power Resources All rights reserved.

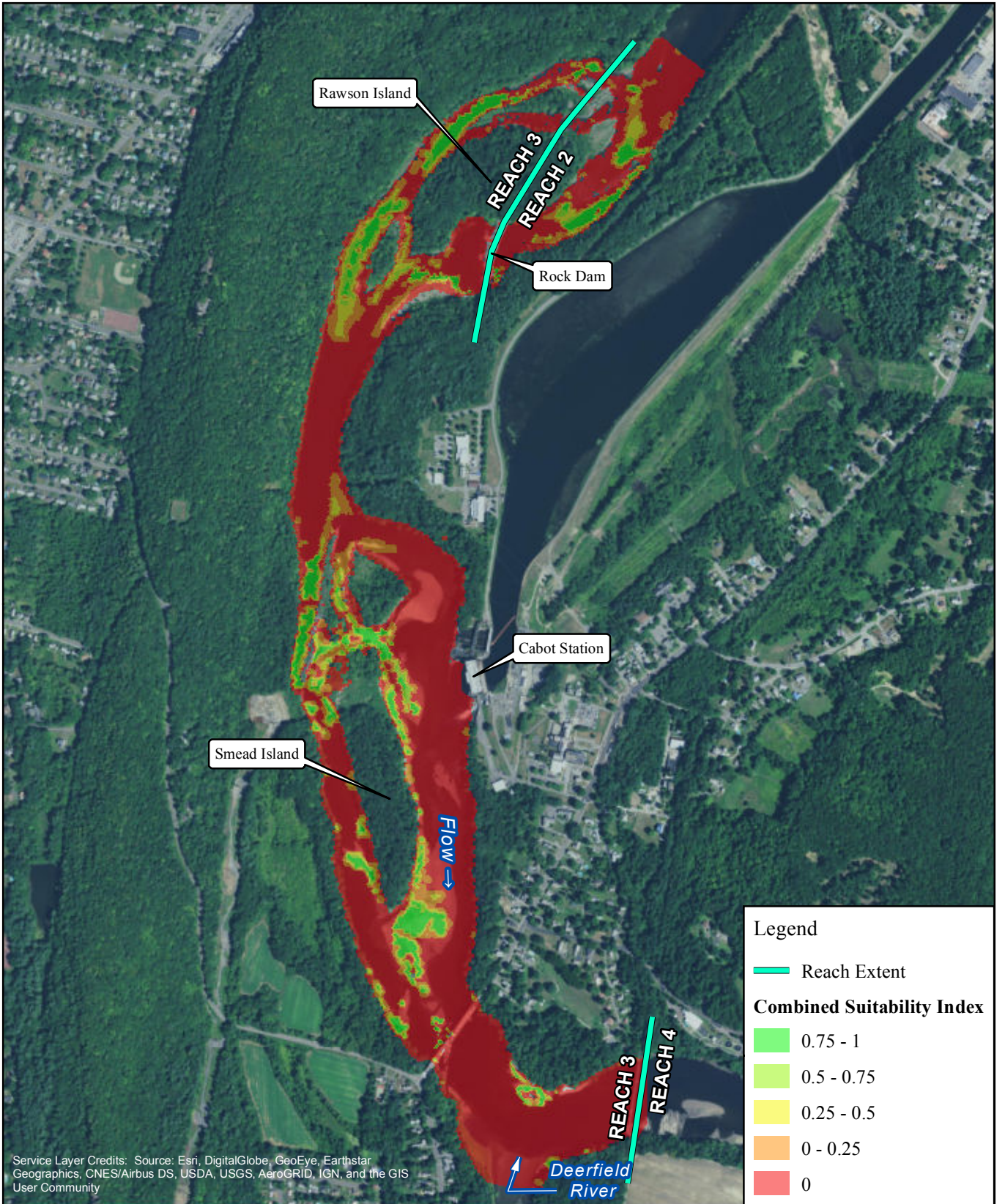


FIRSTLIGHT HYDRO GENERATING COMPANY  
 Northfield Mountain Pumped Storage Project No. 2485  
 Turners Falls Hydroelectric Project No. 1889  
 RELICENSING STUDY 3.3.1



Deep-Fast Guild-  
 Cabot Flow: 14000 cfs  
 Bypass Flow: 500 cfs  
 Deerfield Flow: 200 cfs

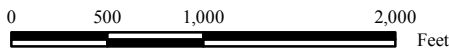
Copyright © 2017 FirstLight Power Resources All rights reserved.



Service Layer Credits: Source: Esri, DigitalGlobe, GeoEye, Earthstar Geographics, CNES/Airbus DS, USDA, USGS, AeroGRID, IGN, and the GIS User Community



FIRSTLIGHT HYDRO GENERATING COMPANY  
 Northfield Mountain Pumped Storage Project No. 2485  
 Turners Falls Hydroelectric Project No. 1889  
 RELICENSING STUDY 3.3.1



**Legend**

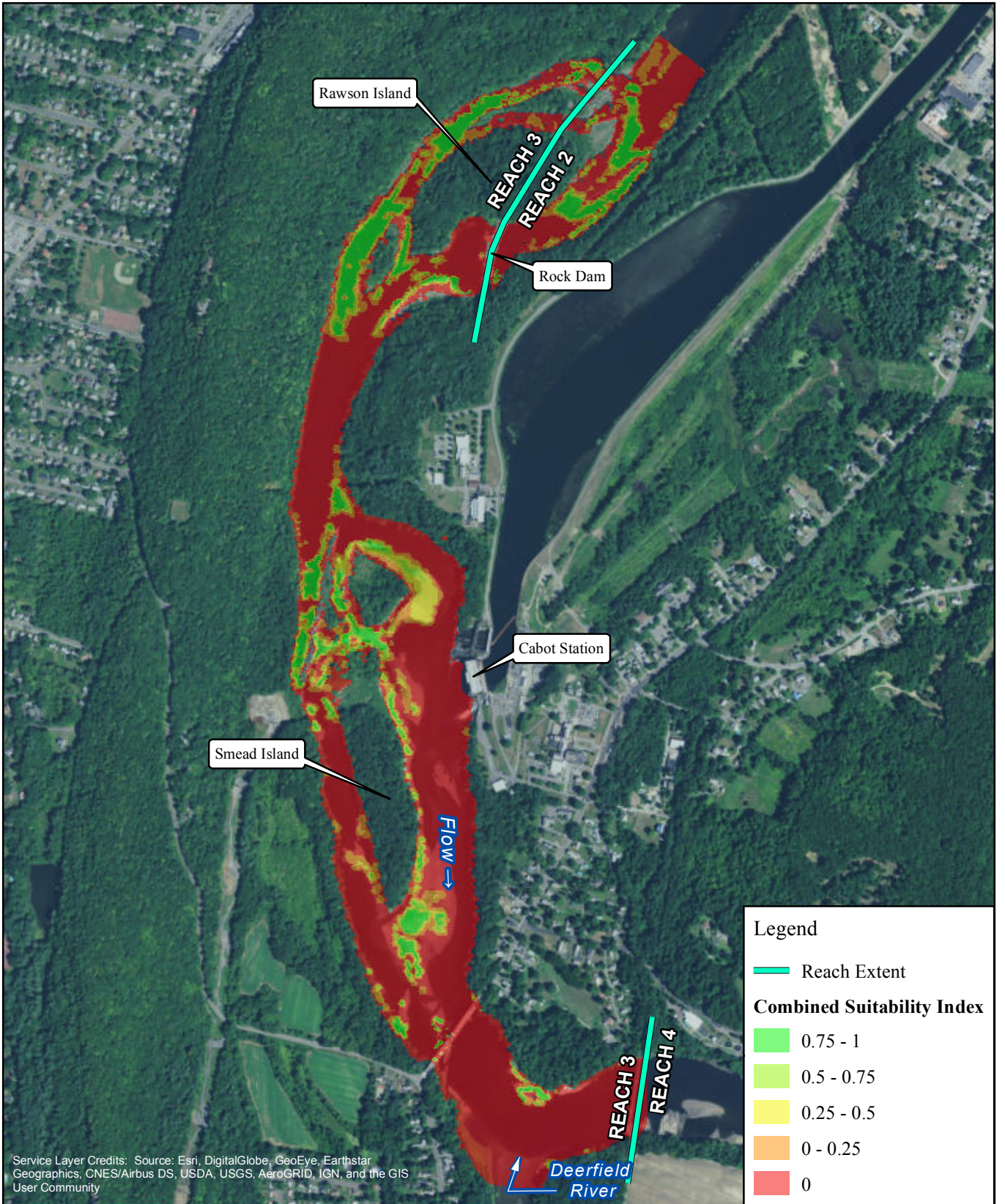
- Reach Extent

**Combined Suitability Index**

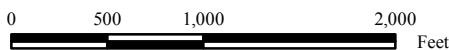
- 0.75 - 1
- 0.5 - 0.75
- 0.25 - 0.5
- 0 - 0.25
- 0

Deep-Fast Guild-  
 Cabot Flow: 14000 cfs  
 Bypass Flow: 1000 cfs  
 Deerfield Flow: 200 cfs

Copyright © 2017 FirstLight Power Resources All rights reserved.



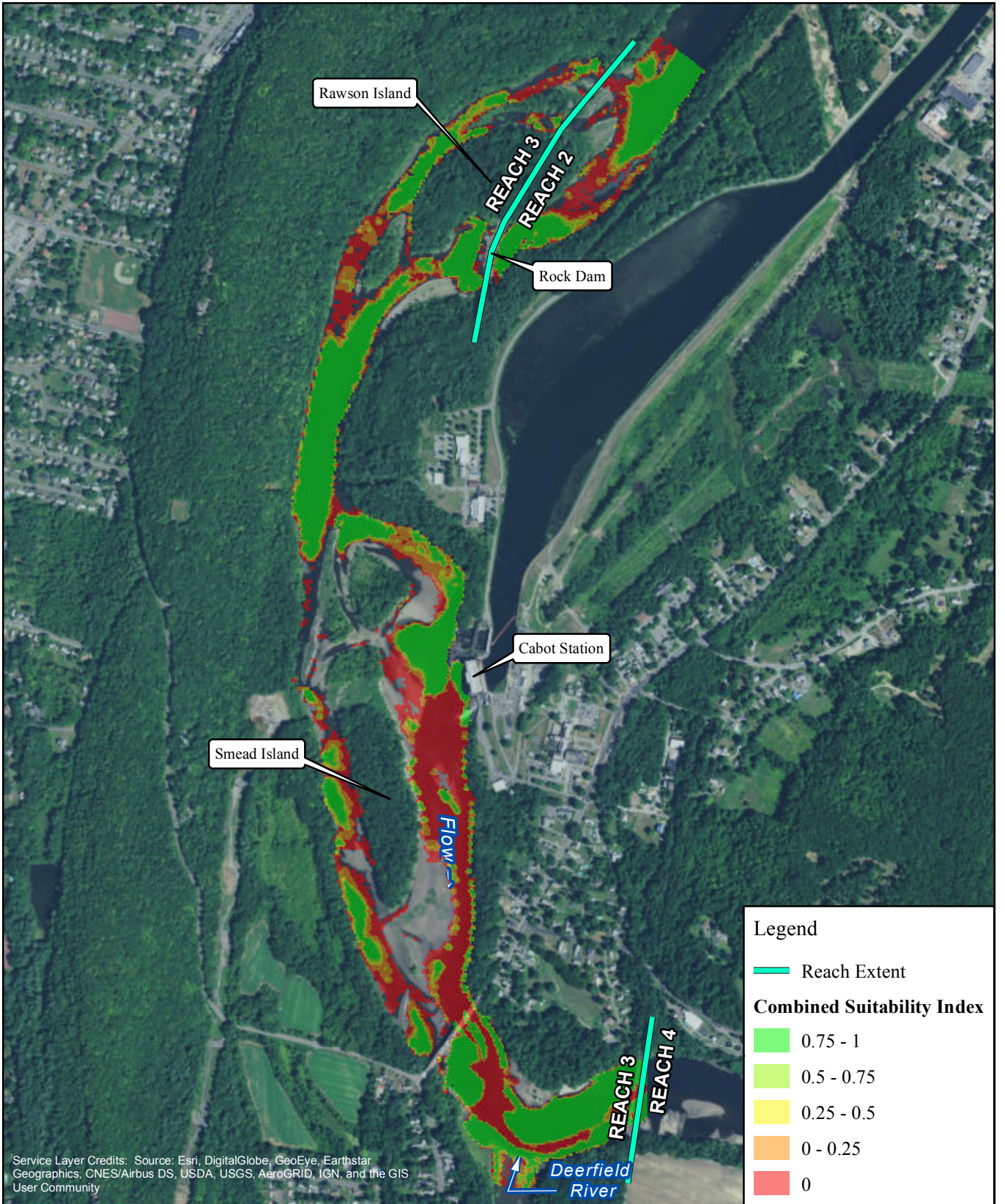
FIRSTLIGHT HYDRO GENERATING COMPANY  
 Northfield Mountain Pumped Storage Project No. 2485  
 Turners Falls Hydroelectric Project No. 1889  
 RELICENSING STUDY 3.3.1



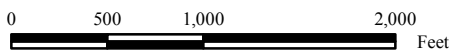
Deep-Fast Guild-  
 Cabot Flow: 14000 cfs  
 Bypass Flow: 2000 cfs  
 Deerfield Flow: 200 cfs

Copyright © 2017 FirstLight Power Resources All rights reserved.



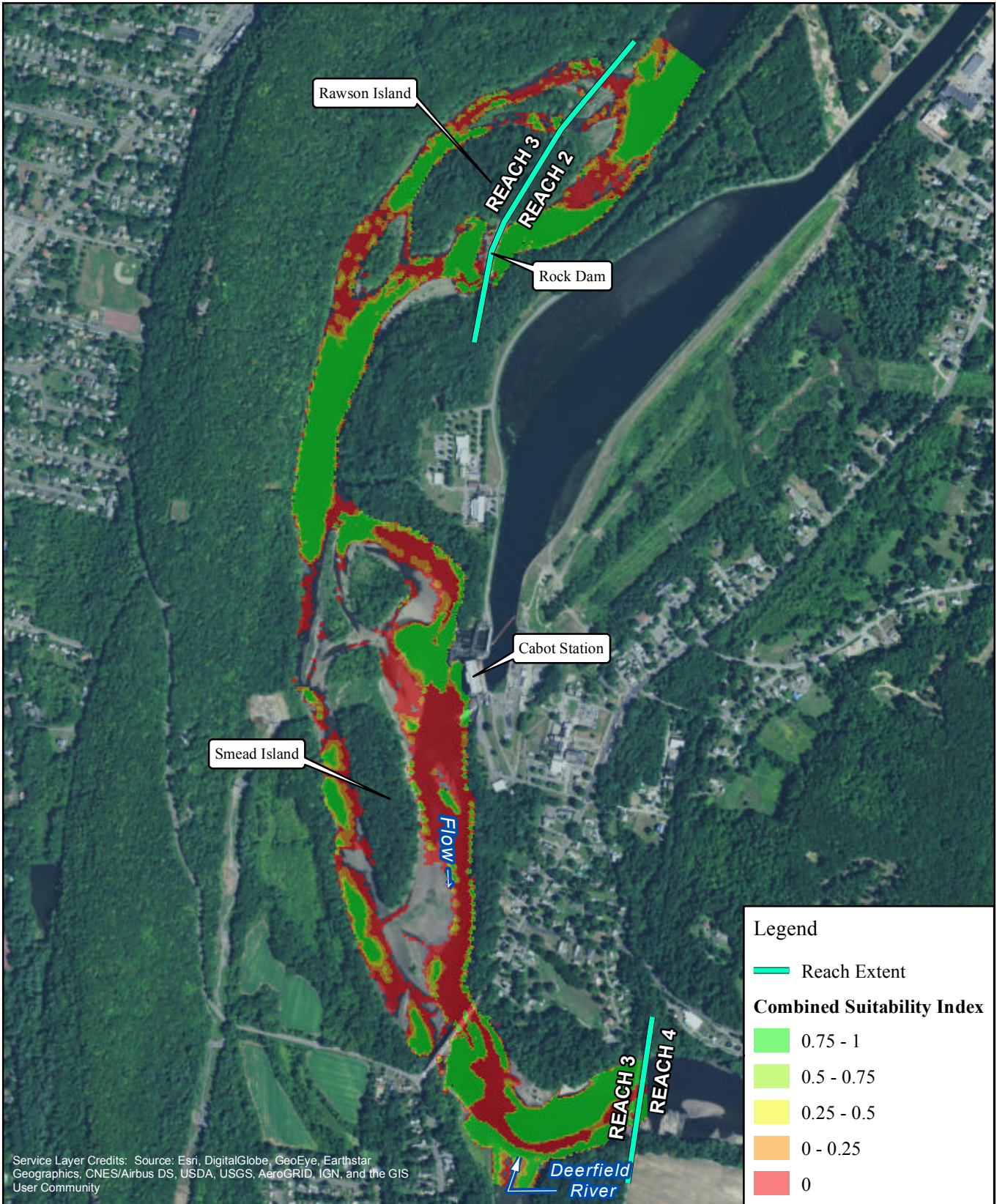


FIRSTLIGHT HYDRO GENERATING COMPANY  
 Northfield Mountain Pumped Storage Project No. 2485  
 Turners Falls Hydroelectric Project No. 1889  
 RELICENSING STUDY 3.3.1

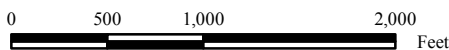


Deep-Slow Guild-  
 Cabot Flow: 2500 cfs  
 Bypass Flow: 200 cfs  
 Deerfield Flow: 200 cfs

Copyright © 2017 FirstLight Power Resources All rights reserved.

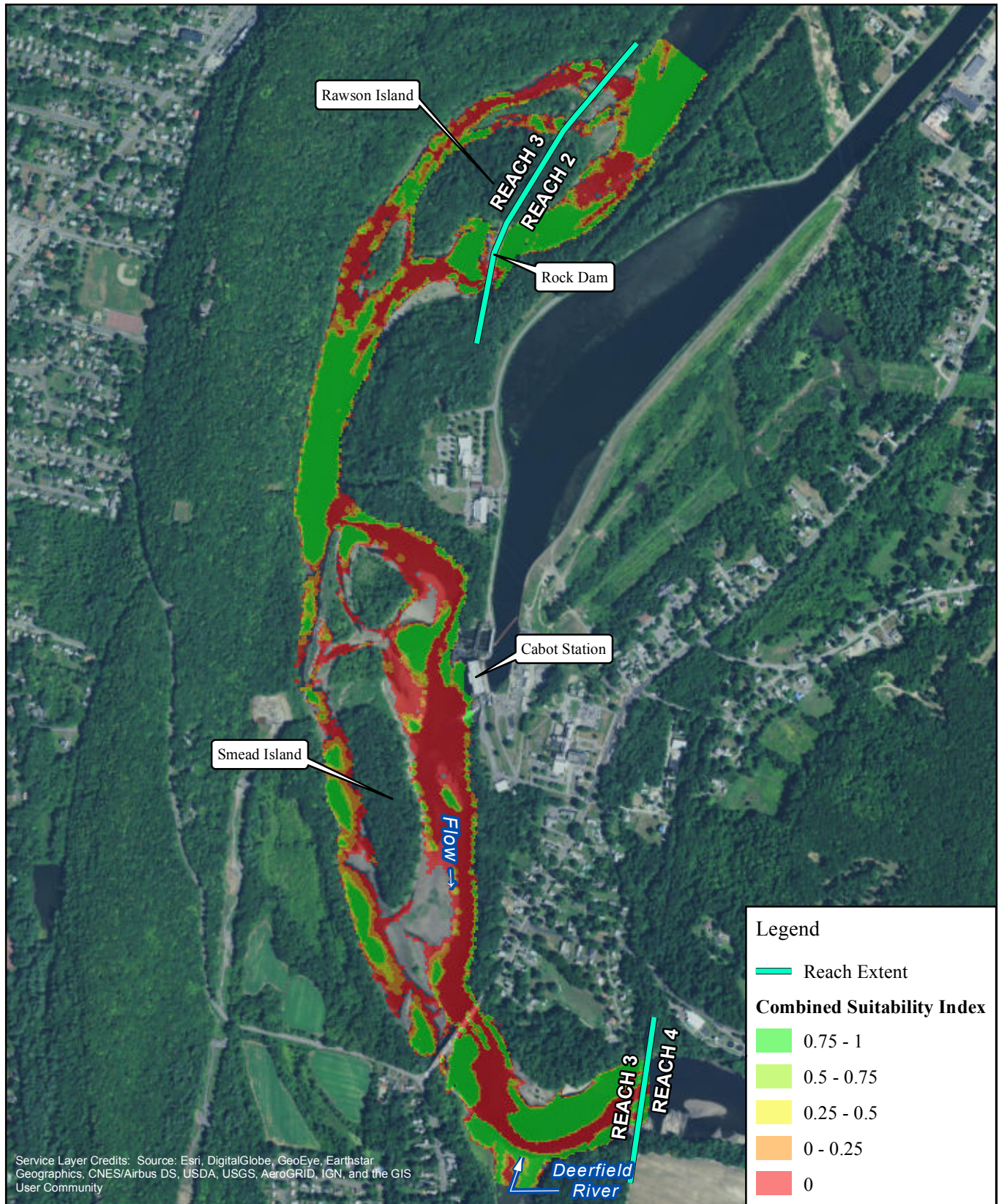


FIRSTLIGHT HYDRO GENERATING COMPANY  
 Northfield Mountain Pumped Storage Project No. 2485  
 Turners Falls Hydroelectric Project No. 1889  
 RELICENSING STUDY 3.3.1



Deep-Slow Guild-  
 Cabot Flow: 2500 cfs  
 Bypass Flow: 500 cfs  
 Deerfield Flow: 200 cfs

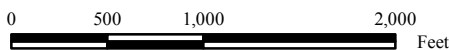
Copyright © 2017 FirstLight Power Resources All rights reserved.



Service Layer Credits: Source: Esri, DigitalGlobe, GeoEye, Earthstar Geographics, CNES/Airbus DS, USDA, USGS, AeroGRID, IGN, and the GIS User Community

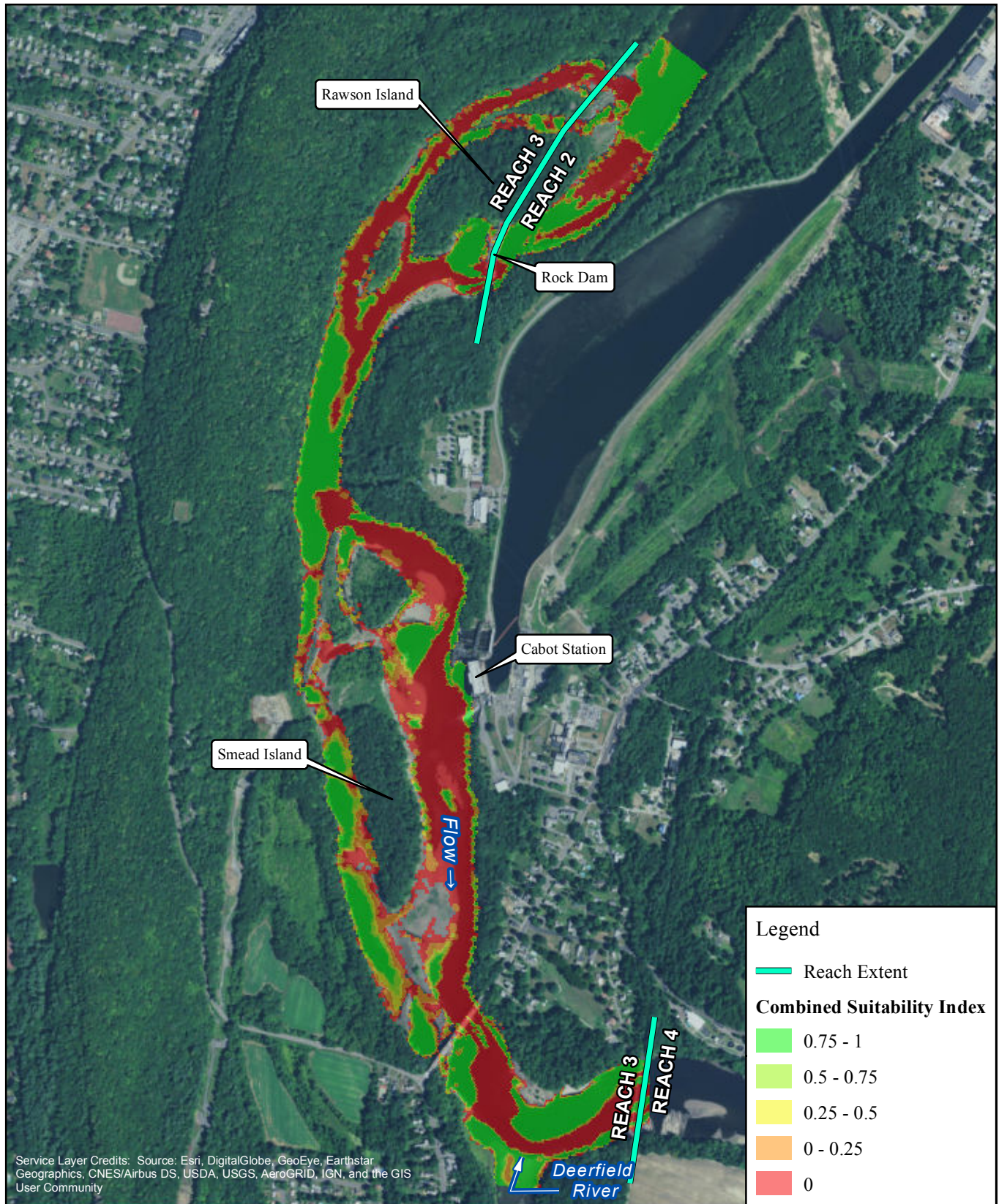


FIRSTLIGHT HYDRO GENERATING COMPANY  
 Northfield Mountain Pumped Storage Project No. 2485  
 Turners Falls Hydroelectric Project No. 1889  
 RELICENSING STUDY 3.3.1

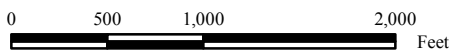


Deep-Slow Guild-  
 Cabot Flow: 2500 cfs  
 Bypass Flow: 1000 cfs  
 Deerfield Flow: 200 cfs

Copyright © 2017 FirstLight Power Resources All rights reserved.

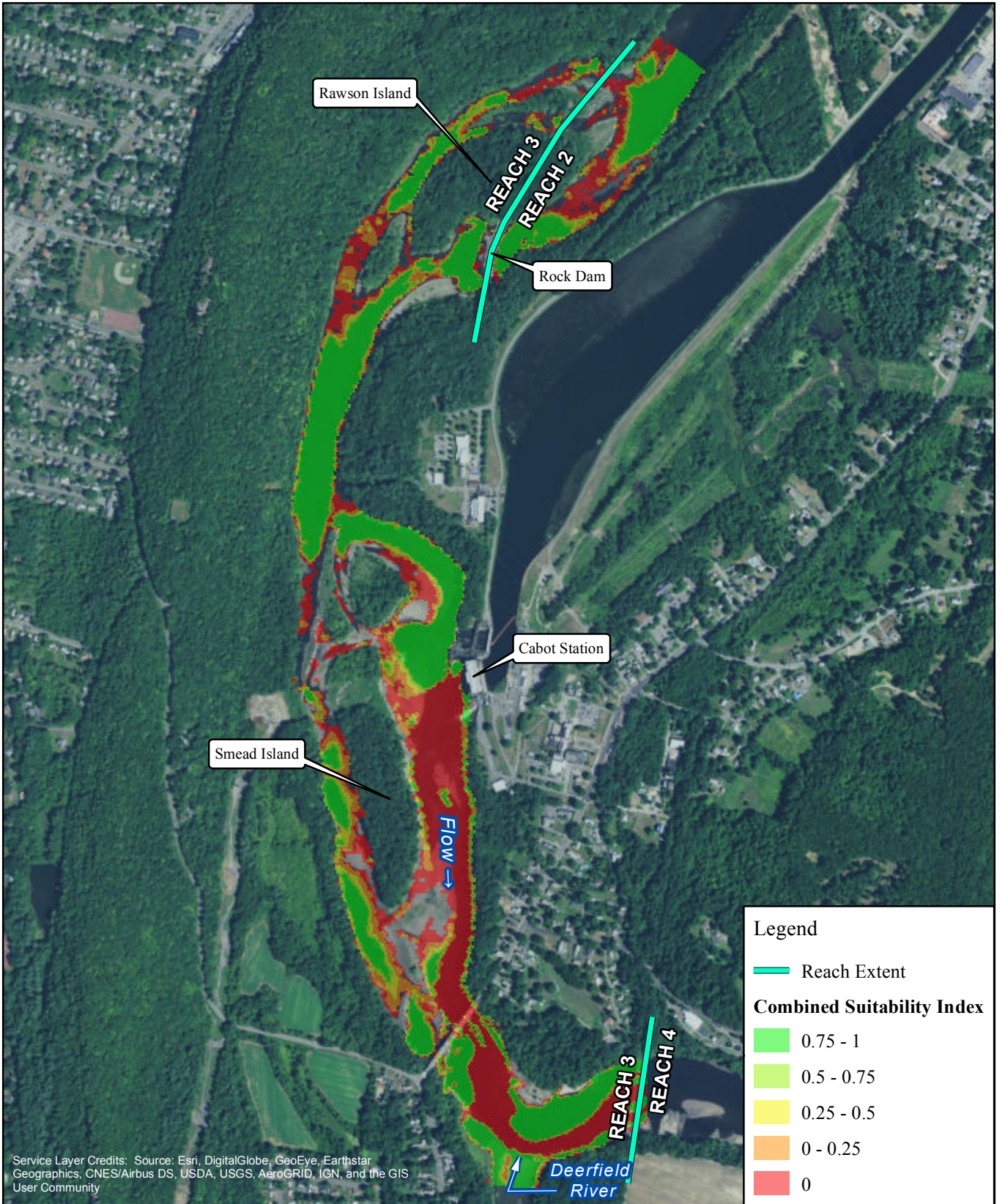


FIRSTLIGHT HYDRO GENERATING COMPANY  
 Northfield Mountain Pumped Storage Project No. 2485  
 Turners Falls Hydroelectric Project No. 1889  
 RELICENSING STUDY 3.3.1

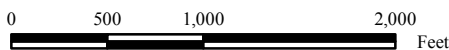


Deep-Slow Guild-  
 Cabot Flow: 2500 cfs  
 Bypass Flow: 2000 cfs  
 Deerfield Flow: 200 cfs

Copyright © 2017 FirstLight Power Resources All rights reserved.

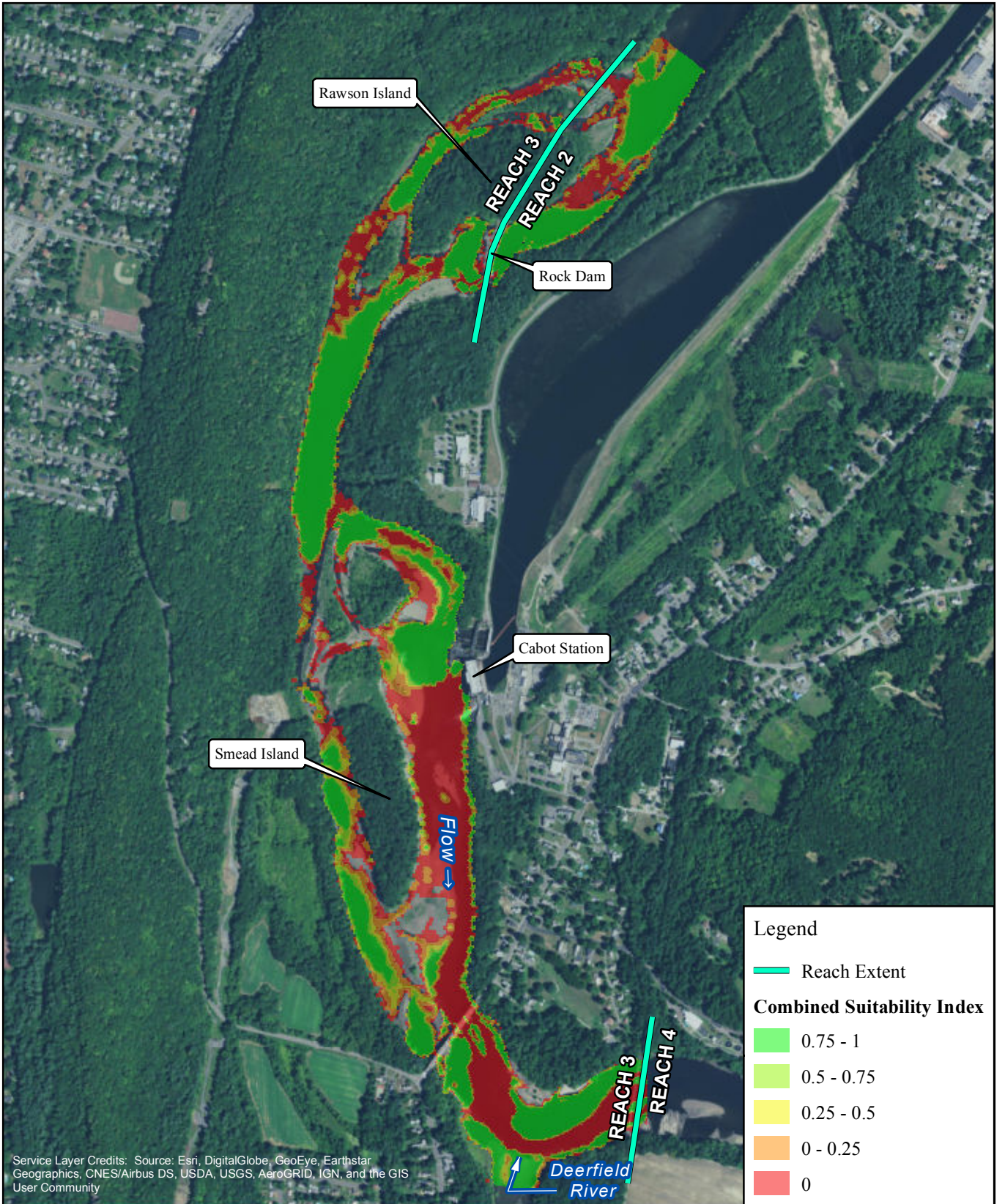


FIRSTLIGHT HYDRO GENERATING COMPANY  
 Northfield Mountain Pumped Storage Project No. 2485  
 Turners Falls Hydroelectric Project No. 1889  
 RELICENSING STUDY 3.3.1

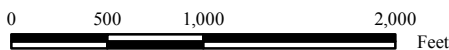


Deep-Slow Guild-  
 Cabot Flow: 4500 cfs  
 Bypass Flow: 200 cfs  
 Deerfield Flow: 200 cfs

Copyright © 2017 FirstLight Power Resources All rights reserved.

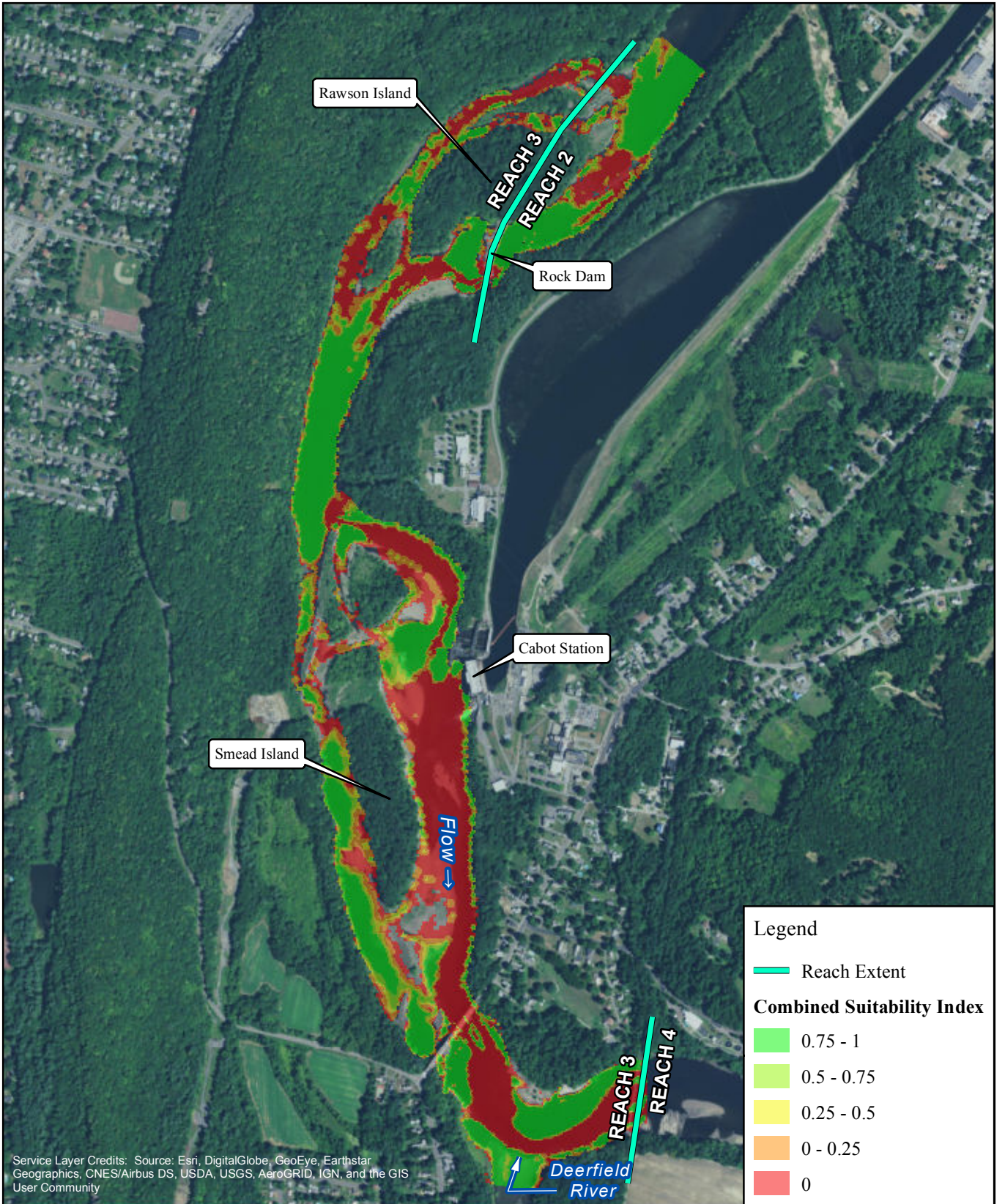


FIRSTLIGHT HYDRO GENERATING COMPANY  
 Northfield Mountain Pumped Storage Project No. 2485  
 Turners Falls Hydroelectric Project No. 1889  
 RELICENSING STUDY 3.3.1

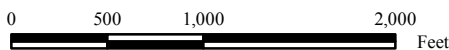


Deep-Slow Guild-  
 Cabot Flow: 4500 cfs  
 Bypass Flow: 500 cfs  
 Deerfield Flow: 200 cfs

Copyright © 2017 FirstLight Power Resources All rights reserved.

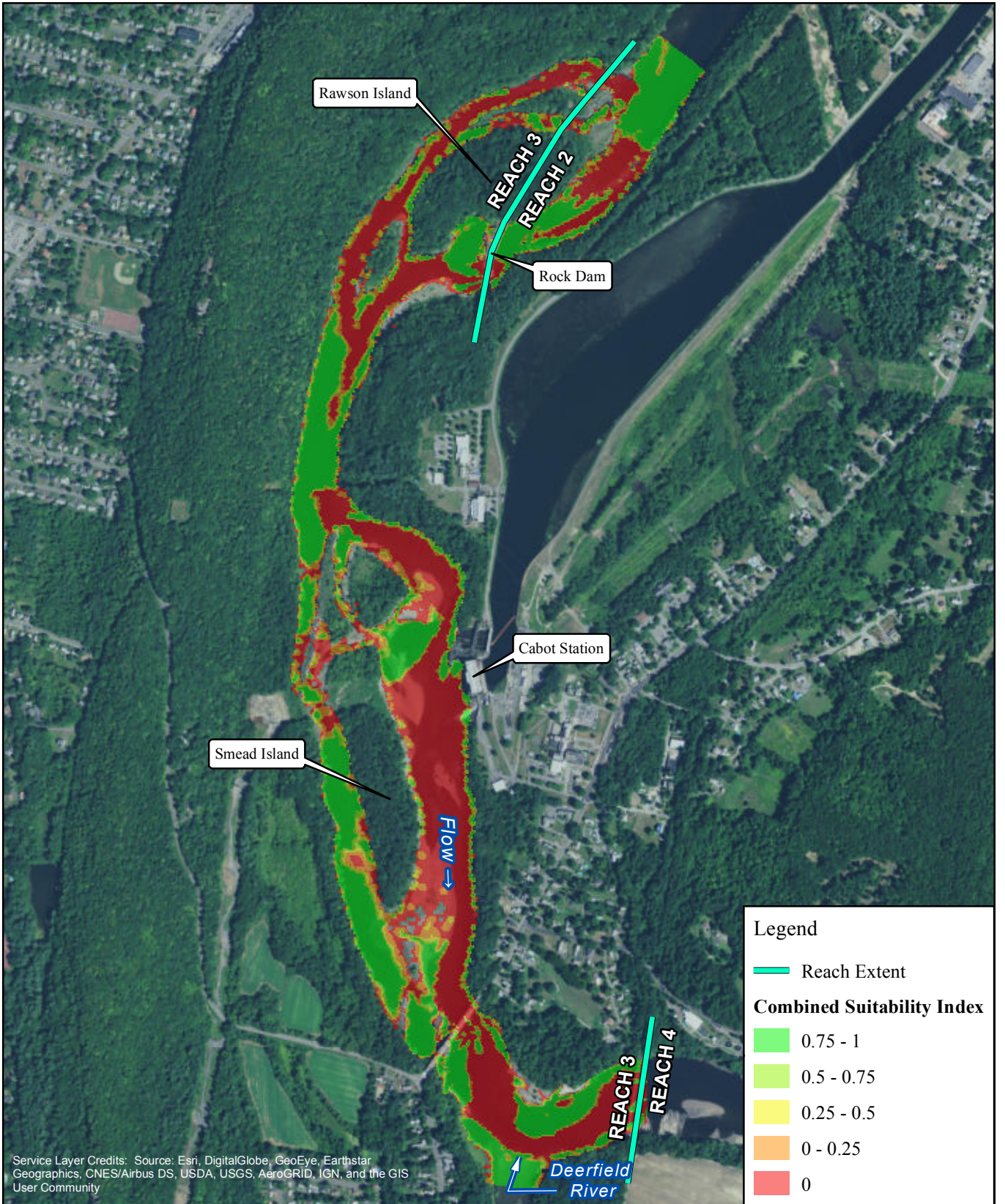


FIRSTLIGHT HYDRO GENERATING COMPANY  
 Northfield Mountain Pumped Storage Project No. 2485  
 Turners Falls Hydroelectric Project No. 1889  
 RELICENSING STUDY 3.3.1

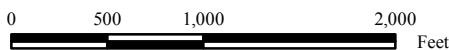


Deep-Slow Guild-  
 Cabot Flow: 4500 cfs  
 Bypass Flow: 1000 cfs  
 Deerfield Flow: 200 cfs

Copyright © 2017 FirstLight Power Resources All rights reserved.



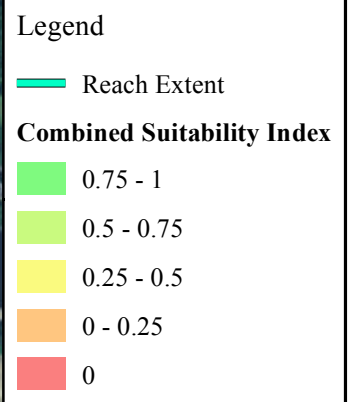
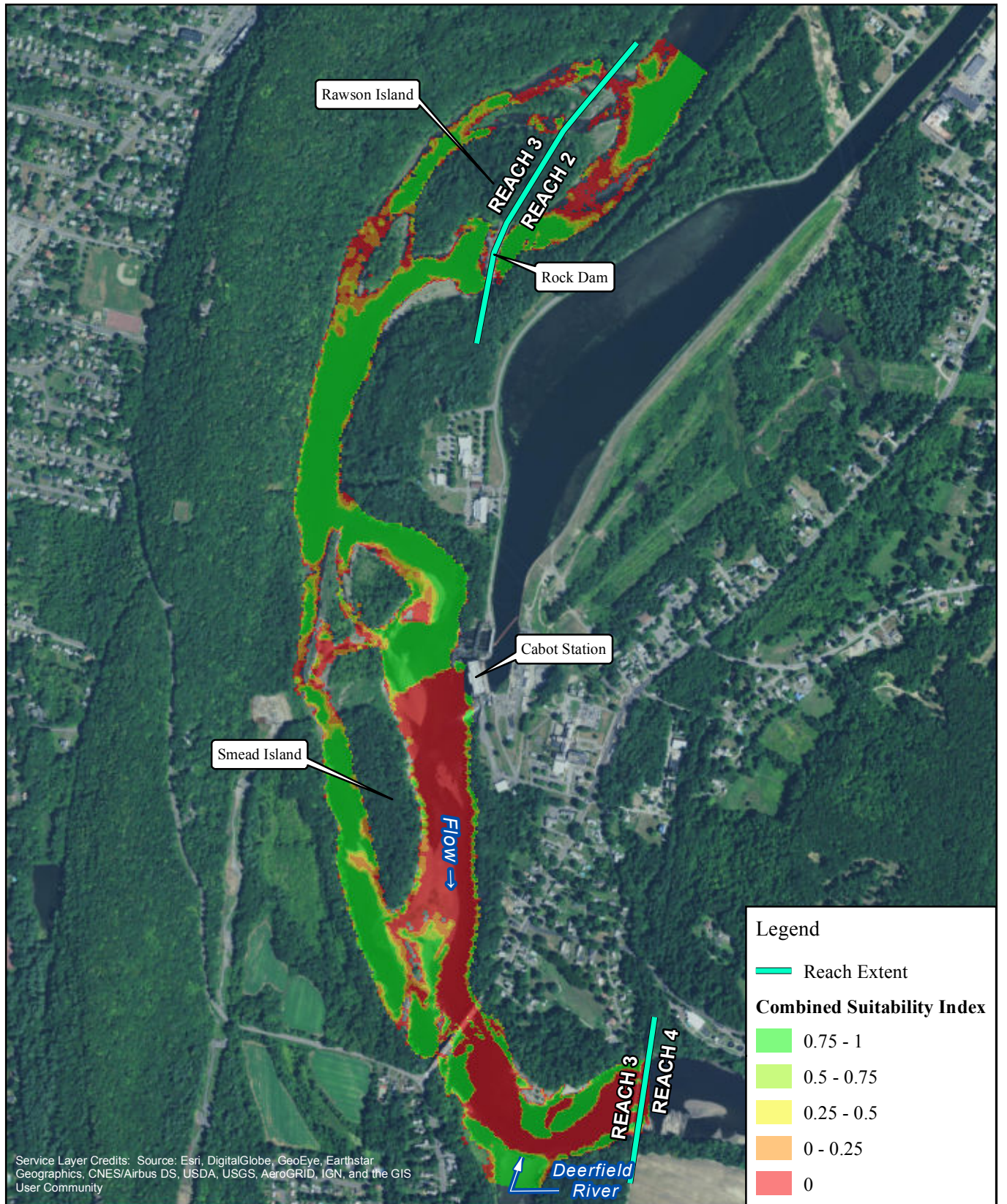
FIRSTLIGHT HYDRO GENERATING COMPANY  
 Northfield Mountain Pumped Storage Project No. 2485  
 Turners Falls Hydroelectric Project No. 1889  
 RELICENSING STUDY 3.3.1



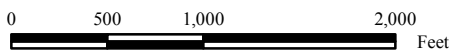
Deep-Slow Guild-  
 Cabot Flow: 4500 cfs  
 Bypass Flow: 2000 cfs  
 Deerfield Flow: 200 cfs

Copyright © 2017 FirstLight Power Resources All rights reserved.



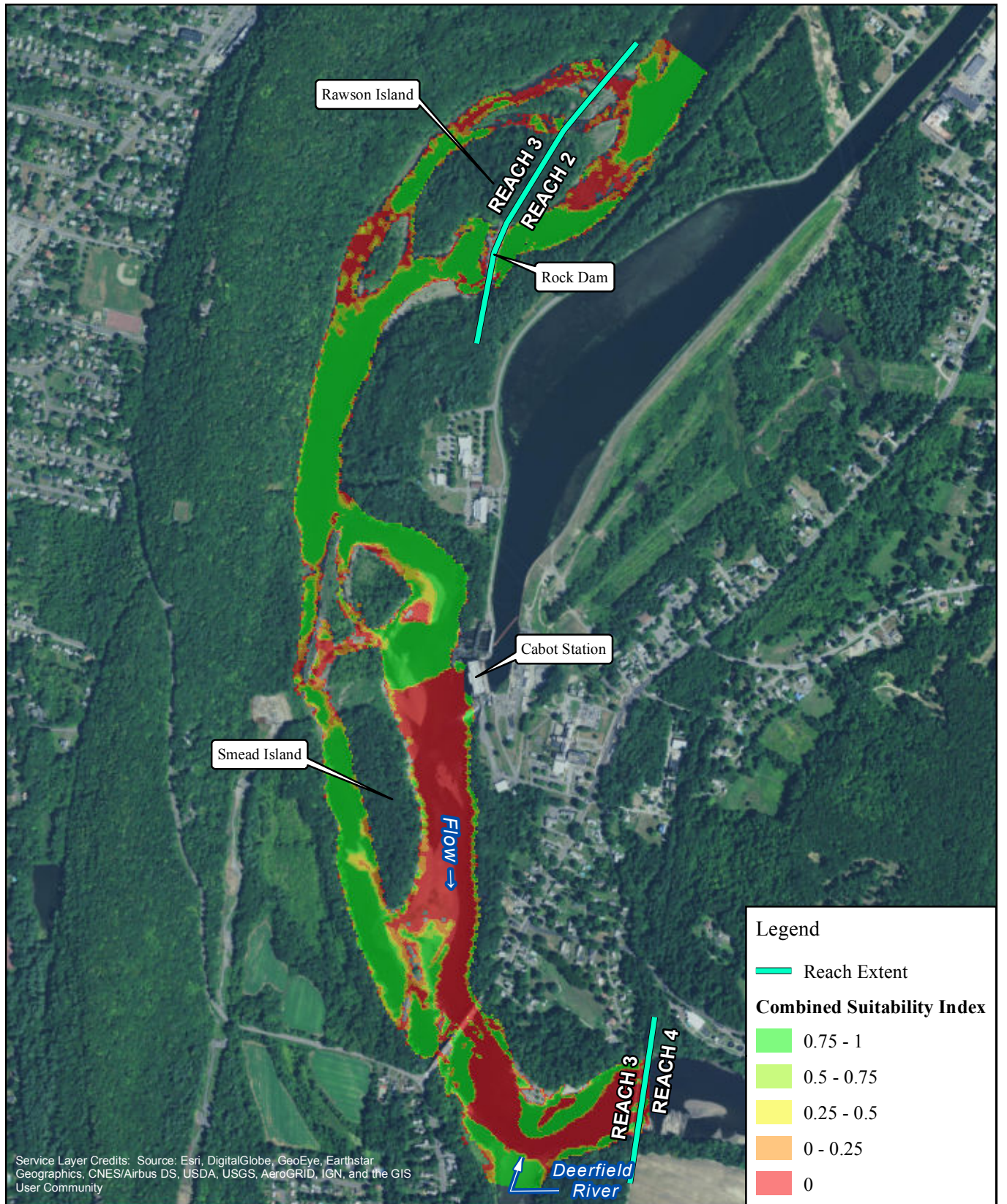


FIRSTLIGHT HYDRO GENERATING COMPANY  
 Northfield Mountain Pumped Storage Project No. 2485  
 Turners Falls Hydroelectric Project No. 1889  
 RELICENSING STUDY 3.3.1

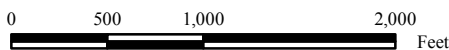


Deep-Slow Guild-  
 Cabot Flow: 7000 cfs  
 Bypass Flow: 200 cfs  
 Deerfield Flow: 200 cfs

Copyright © 2017 FirstLight Power Resources All rights reserved.

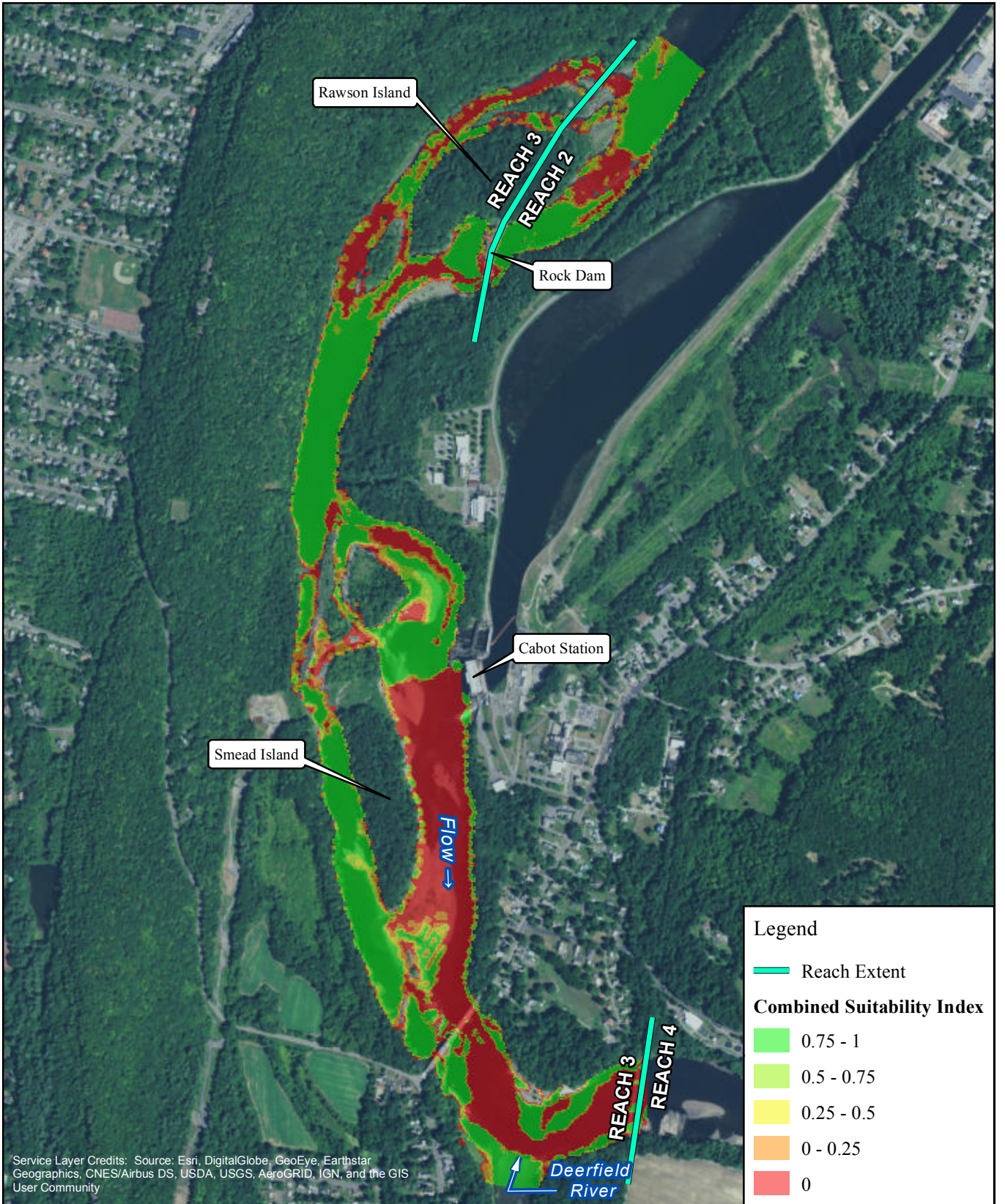


FIRSTLIGHT HYDRO GENERATING COMPANY  
 Northfield Mountain Pumped Storage Project No. 2485  
 Turners Falls Hydroelectric Project No. 1889  
 RELICENSING STUDY 3.3.1

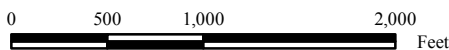


Deep-Slow Guild-  
 Cabot Flow: 7000 cfs  
 Bypass Flow: 500 cfs  
 Deerfield Flow: 200 cfs

Copyright © 2017 FirstLight Power Resources All rights reserved.

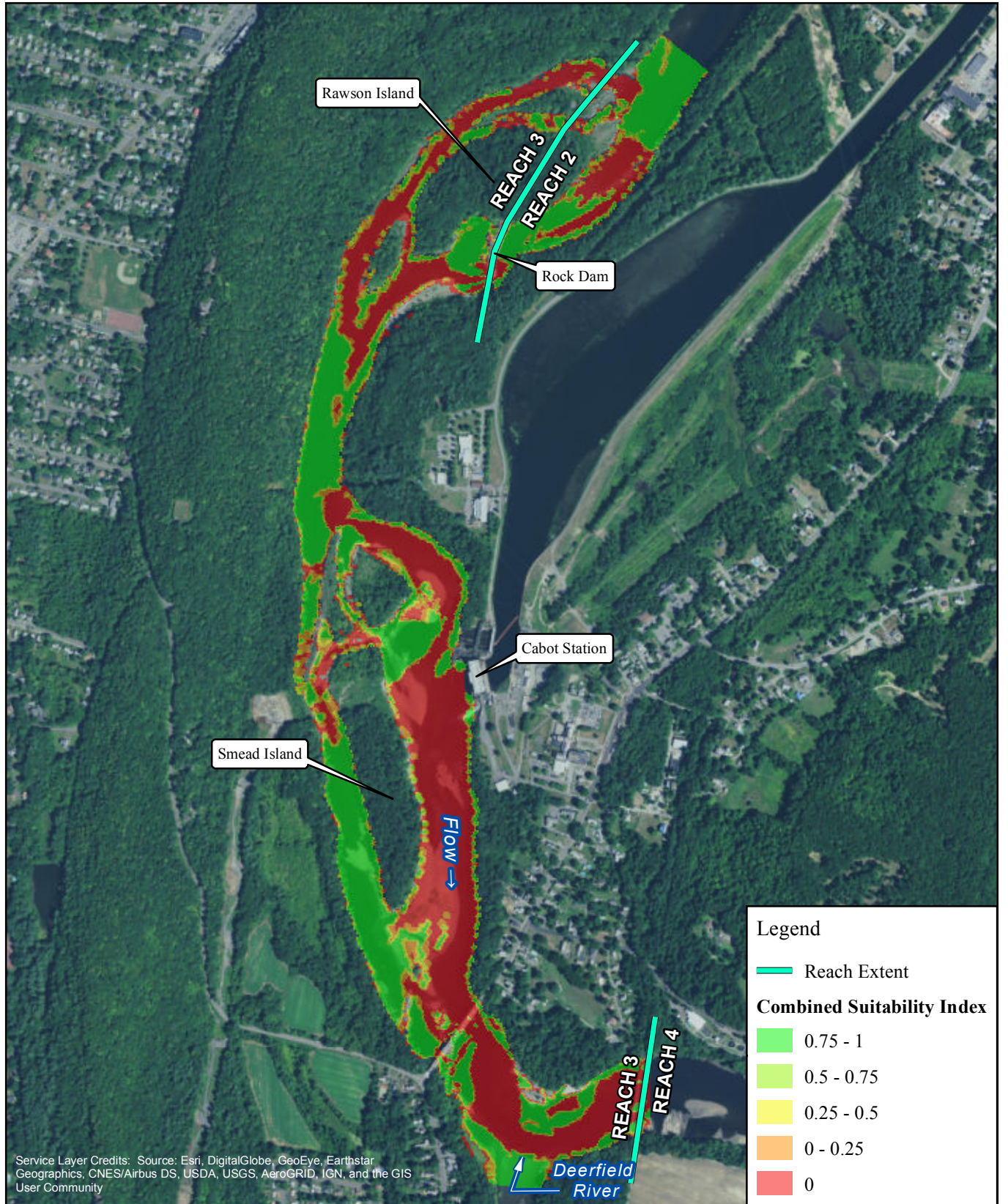


FIRSTLIGHT HYDRO GENERATING COMPANY  
 Northfield Mountain Pumped Storage Project No. 2485  
 Turners Falls Hydroelectric Project No. 1889  
 RELICENSING STUDY 3.3.1

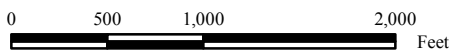


Deep-Slow Guild-  
 Cabot Flow: 7000 cfs  
 Bypass Flow: 1000 cfs  
 Deerfield Flow: 200 cfs

Copyright © 2017 FirstLight Power Resources All rights reserved.

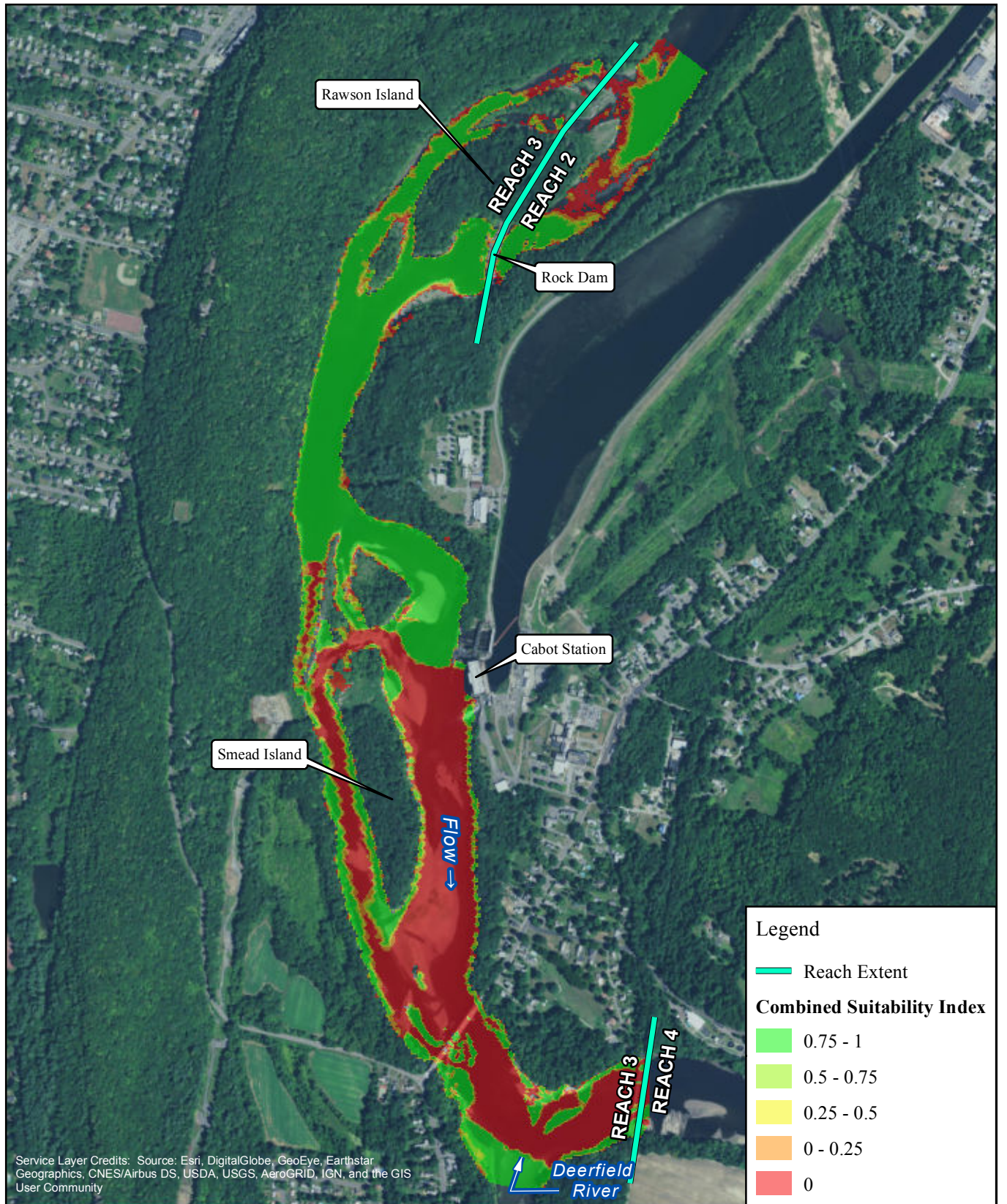


FIRSTLIGHT HYDRO GENERATING COMPANY  
 Northfield Mountain Pumped Storage Project No. 2485  
 Turners Falls Hydroelectric Project No. 1889  
 RELICENSING STUDY 3.3.1

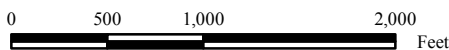


Deep-Slow Guild-  
 Cabot Flow: 7000 cfs  
 Bypass Flow: 2000 cfs  
 Deerfield Flow: 200 cfs

Copyright © 2017 FirstLight Power Resources All rights reserved.

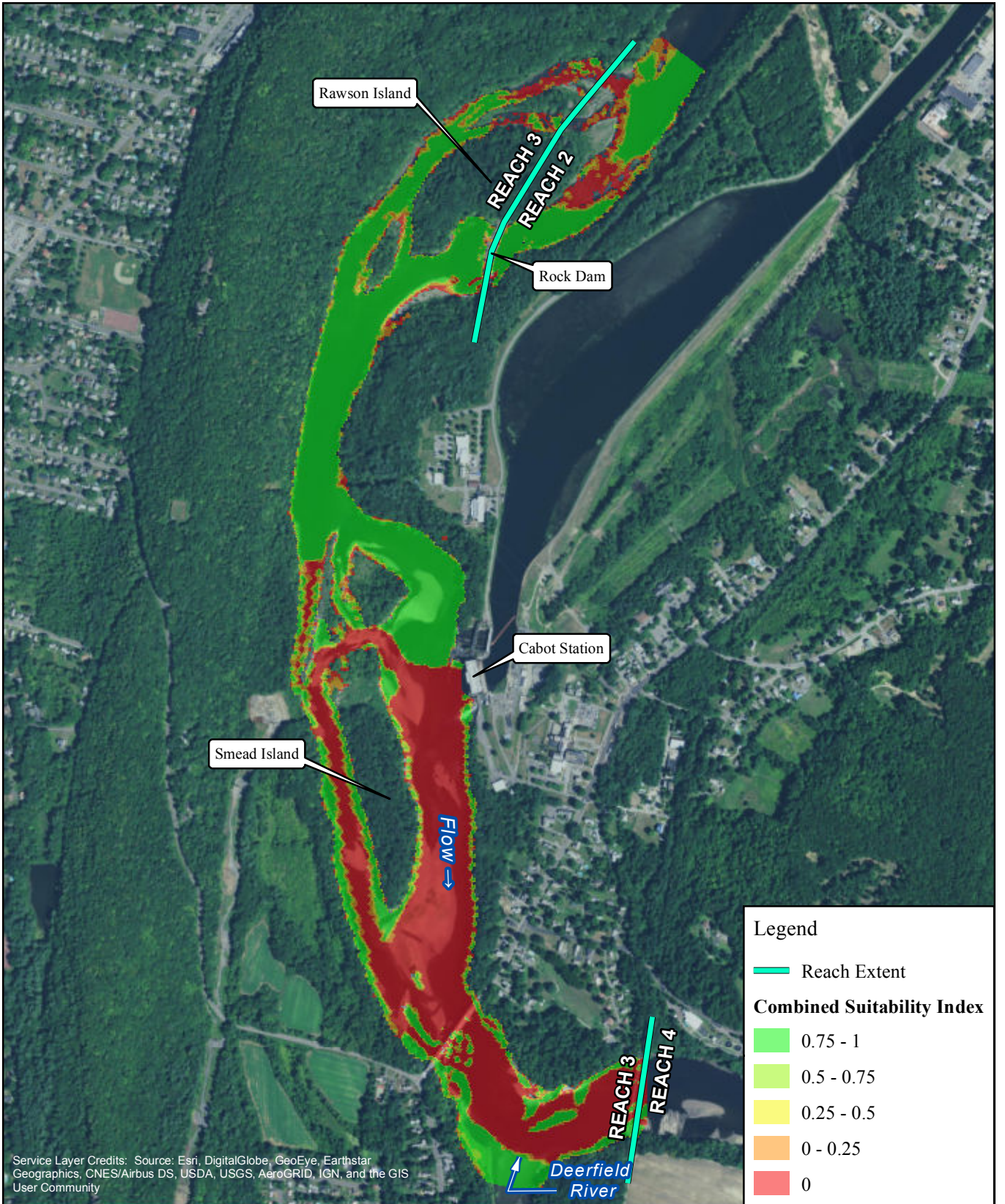


FIRSTLIGHT HYDRO GENERATING COMPANY  
 Northfield Mountain Pumped Storage Project No. 2485  
 Turners Falls Hydroelectric Project No. 1889  
 RELICENSING STUDY 3.3.1

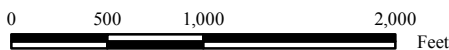


Deep-Slow Guild-  
 Cabot Flow: 14000 cfs  
 Bypass Flow: 200 cfs  
 Deerfield Flow: 200 cfs

Copyright © 2017 FirstLight Power Resources All rights reserved.

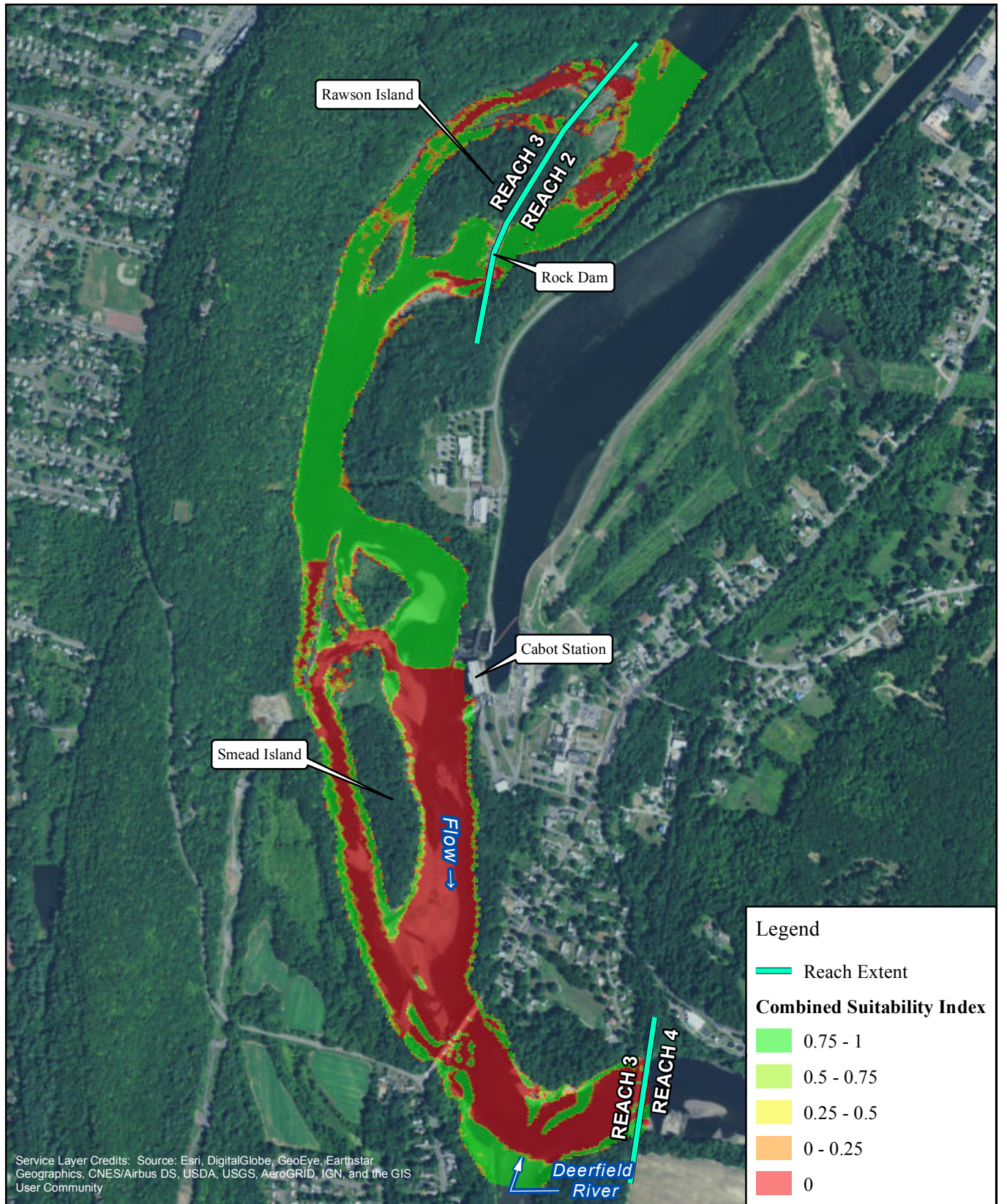


FIRSTLIGHT HYDRO GENERATING COMPANY  
 Northfield Mountain Pumped Storage Project No. 2485  
 Turners Falls Hydroelectric Project No. 1889  
 RELICENSING STUDY 3.3.1

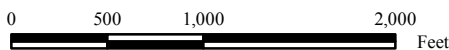


Deep-Slow Guild-  
 Cabot Flow: 14000 cfs  
 Bypass Flow: 500 cfs  
 Deerfield Flow: 200 cfs

Copyright © 2017 FirstLight Power Resources All rights reserved.

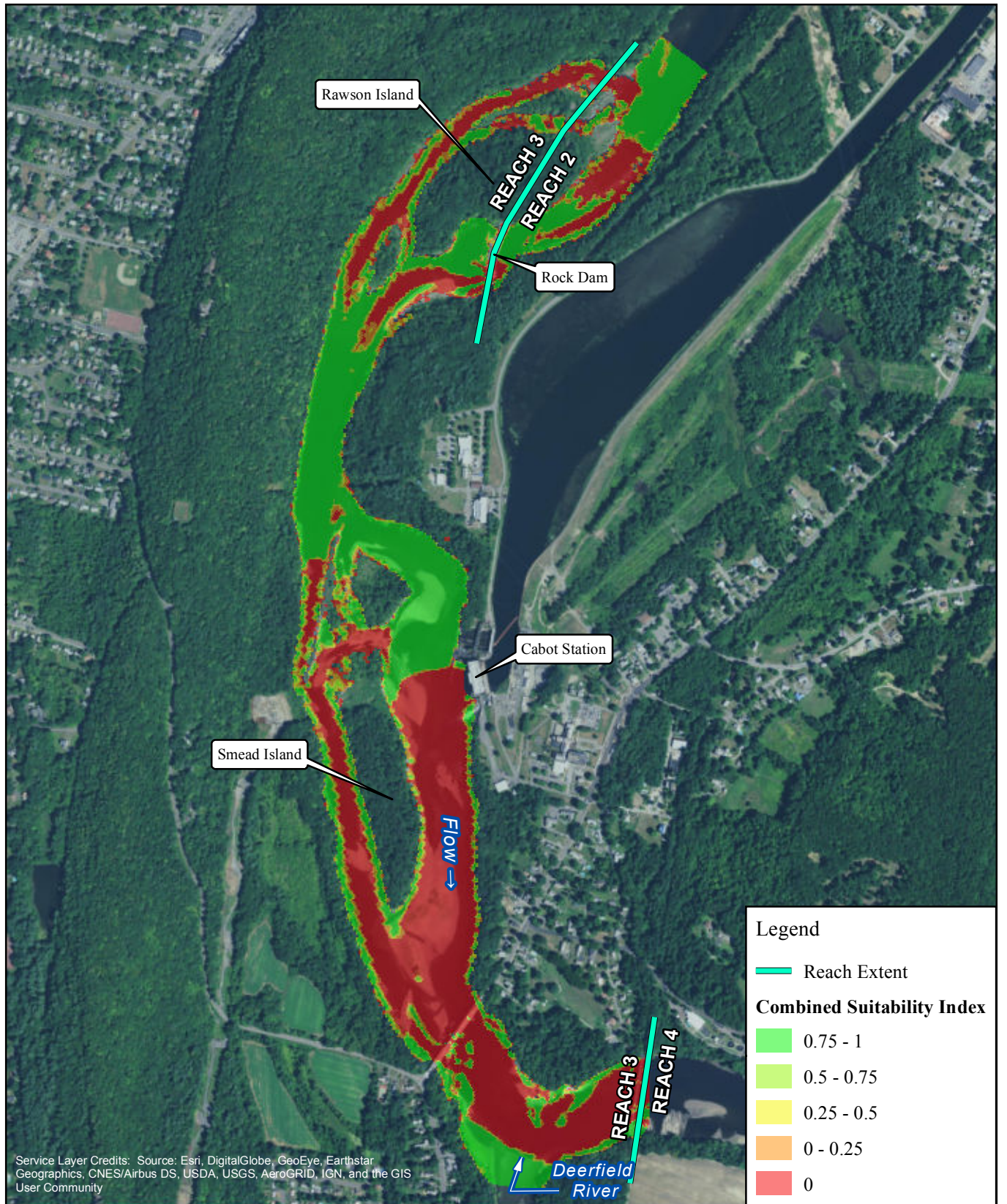


FIRSTLIGHT HYDRO GENERATING COMPANY  
 Northfield Mountain Pumped Storage Project No. 2485  
 Turners Falls Hydroelectric Project No. 1889  
 RELICENSING STUDY 3.3.1

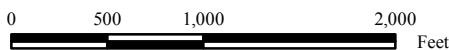


Deep-Slow Guild-  
 Cabot Flow: 14000 cfs  
 Bypass Flow: 1000 cfs  
 Deerfield Flow: 200 cfs

Copyright © 2017 FirstLight Power Resources All rights reserved.



FIRSTLIGHT HYDRO GENERATING COMPANY  
 Northfield Mountain Pumped Storage Project No. 2485  
 Turners Falls Hydroelectric Project No. 1889  
 RELICENSING STUDY 3.3.1



Deep-Slow Guild-  
 Cabot Flow: 14000 cfs  
 Bypass Flow: 2000 cfs  
 Deerfield Flow: 200 cfs

Copyright © 2017 FirstLight Power Resources All rights reserved.