

Service Layer Credits: Source: Esri, DigitalGlobe, GeoEye, Earthstar Geographics, CNES/Airbus DS, USDA, USGS, AeroGRID, IGN, and the GIS User Community

**Legend**

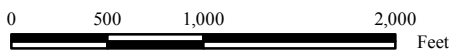
- Reach Extent

**Combined Suitability Index**

- 0.75 - 1
- 0.5 - 0.75
- 0.25 - 0.5
- 0 - 0.25
- 0

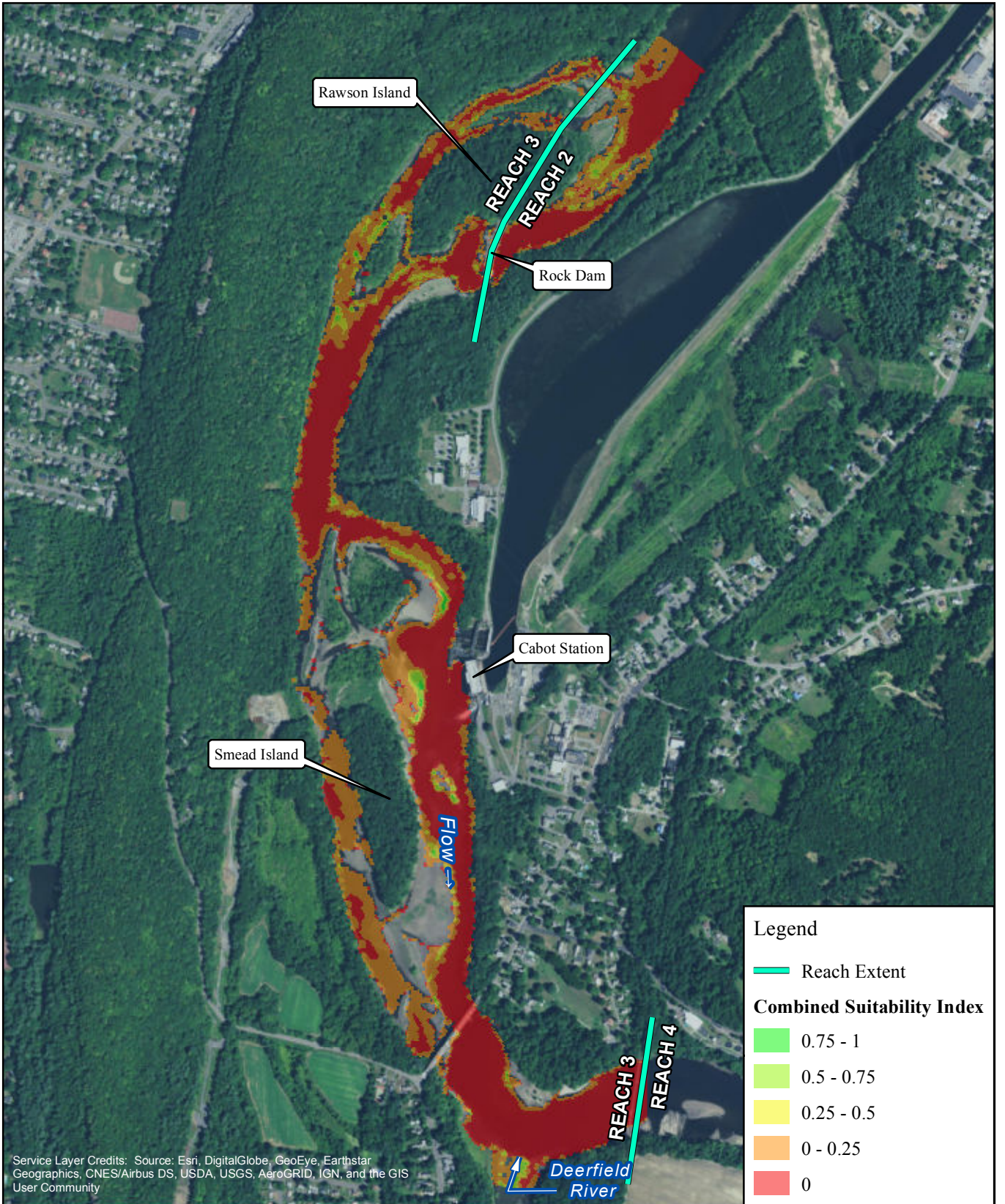


FIRSTLIGHT HYDRO GENERATING COMPANY  
 Northfield Mountain Pumped Storage Project No. 2485  
 Turners Falls Hydroelectric Project No. 1889  
**RELICENSING STUDY 3.3.1**



**Tessellated Darter-Juvenile-Adult**  
 Cabot Flow: 2500 cfs  
 Bypass Flow: 200 cfs  
 Deerfield Flow: 200 cfs

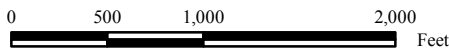
Copyright © 2017 FirstLight Power Resources All rights reserved.



Service Layer Credits: Source: Esri, DigitalGlobe, GeoEye, Earthstar Geographics, CNES/Airbus DS, USDA, USGS, AeroGRID, IGN, and the GIS User Community

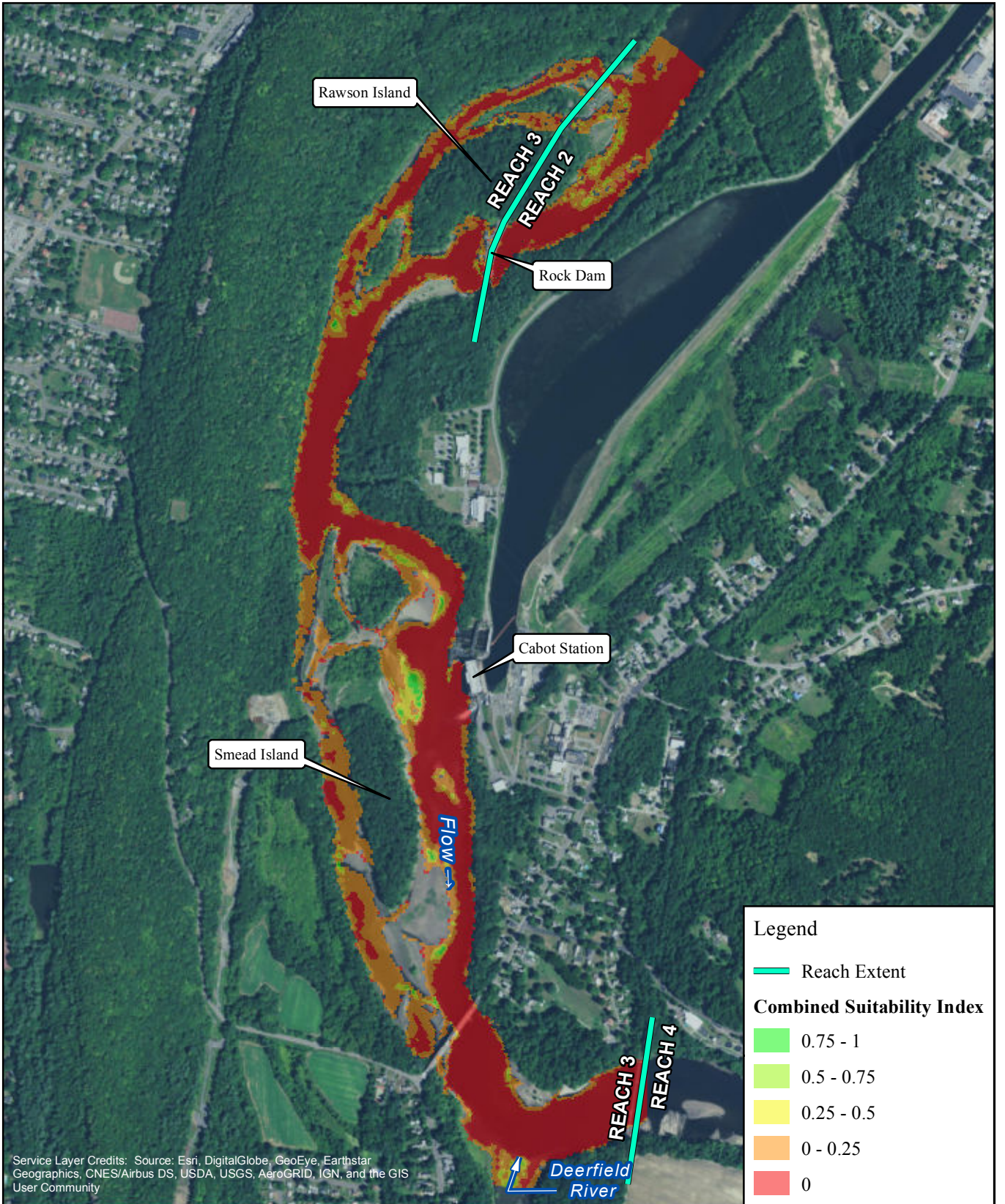


FIRSTLIGHT HYDRO GENERATING COMPANY  
 Northfield Mountain Pumped Storage Project No. 2485  
 Turners Falls Hydroelectric Project No. 1889  
 RELICENSING STUDY 3.3.1



Tessellated Darter-Juvenile-Adult  
 Cabot Flow: 2500 cfs  
 Bypass Flow: 500 cfs  
 Deerfield Flow: 200 cfs

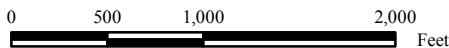
Copyright © 2017 FirstLight Power Resources All rights reserved.



Service Layer Credits: Source: Esri, DigitalGlobe, GeoEye, Earthstar Geographics, CNES/Airbus DS, USDA, USGS, AeroGRID, IGN, and the GIS User Community

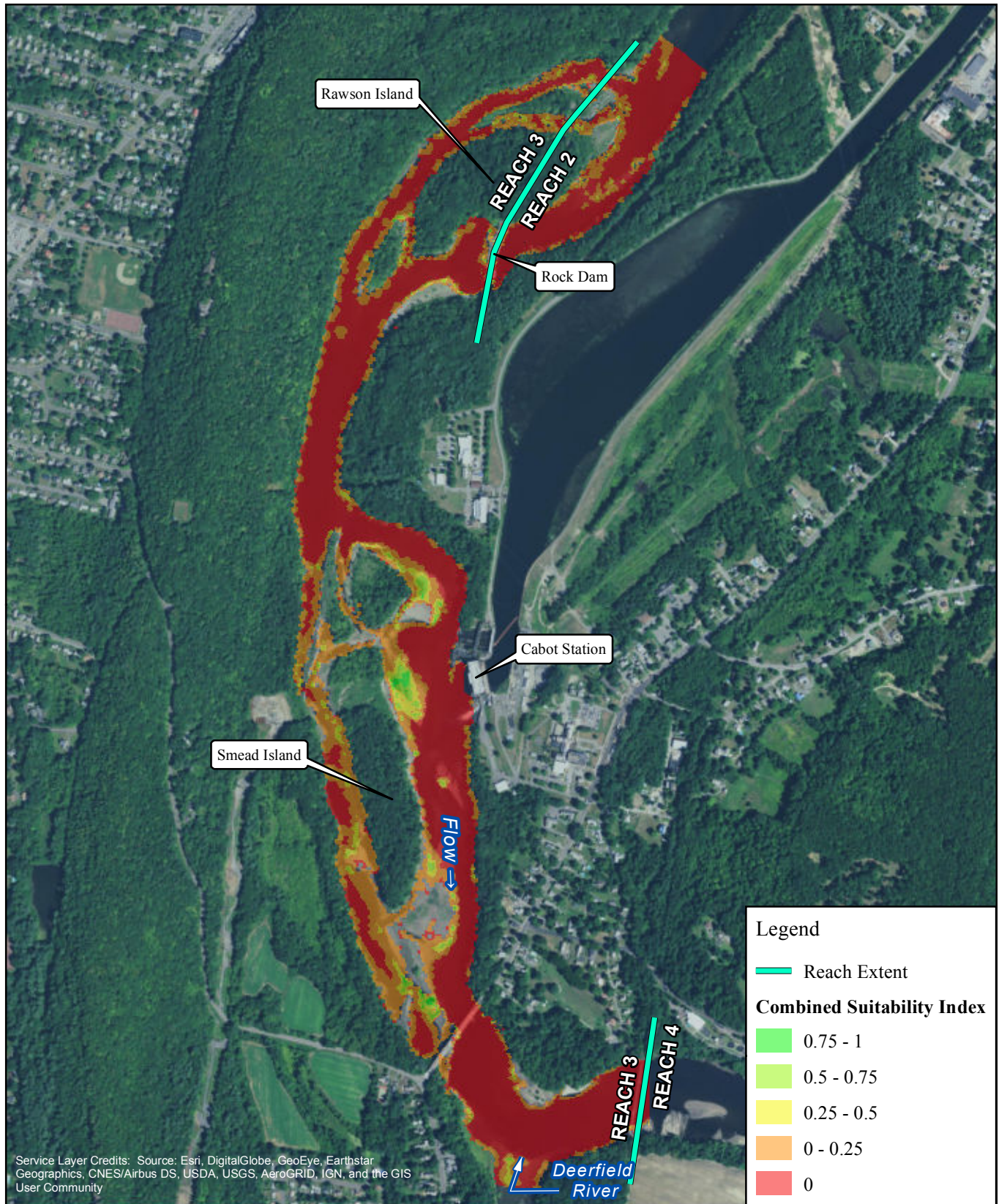


FIRSTLIGHT HYDRO GENERATING COMPANY  
 Northfield Mountain Pumped Storage Project No. 2485  
 Turners Falls Hydroelectric Project No. 1889  
 RELICENSING STUDY 3.3.1



Tessellated Darter-Juvenile-Adult  
 Cabot Flow: 2500 cfs  
 Bypass Flow: 1000 cfs  
 Deerfield Flow: 200 cfs

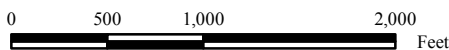
Copyright © 2017 FirstLight Power Resources All rights reserved.



Service Layer Credits: Source: Esri, DigitalGlobe, GeoEye, Earthstar Geographics, CNES/Airbus DS, USDA, USGS, AeroGRID, IGN, and the GIS User Community

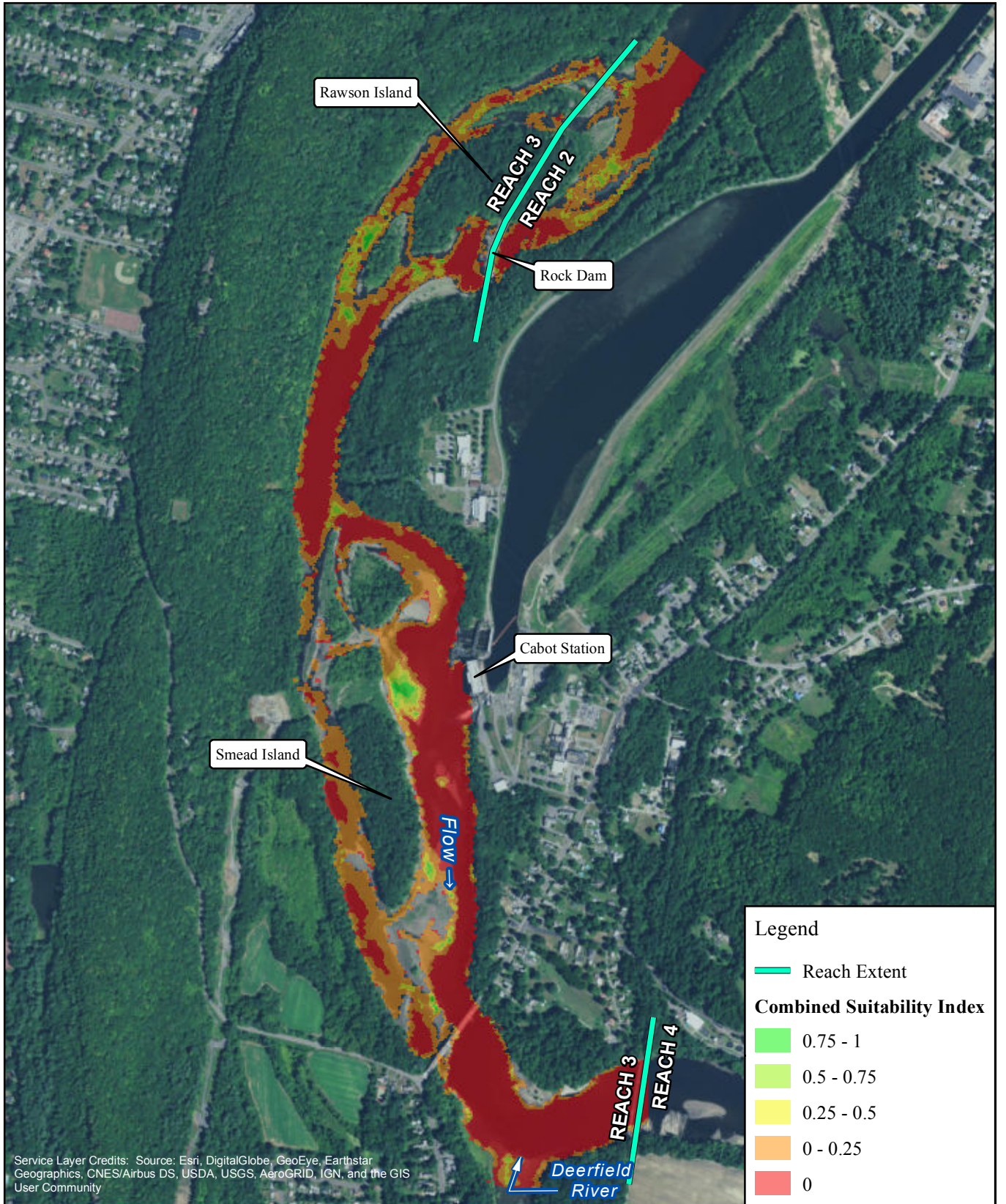


FIRSTLIGHT HYDRO GENERATING COMPANY  
 Northfield Mountain Pumped Storage Project No. 2485  
 Turners Falls Hydroelectric Project No. 1889  
 RELICENSING STUDY 3.3.1

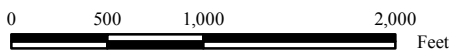


Tessellated Darter-Juvenile-Adult  
 Cabot Flow: 2500 cfs  
 Bypass Flow: 2000 cfs  
 Deerfield Flow: 200 cfs

Copyright © 2017 FirstLight Power Resources All rights reserved.

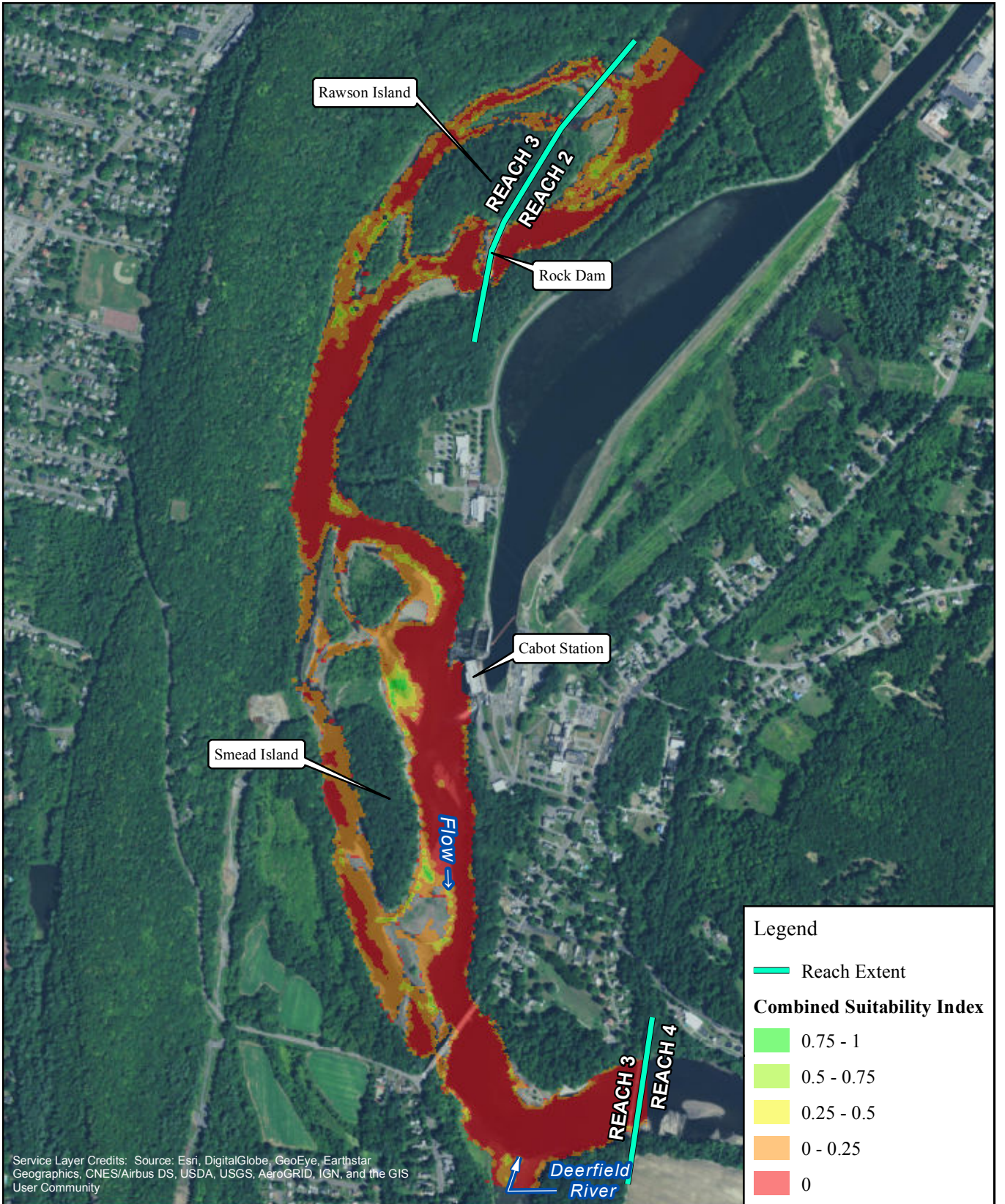


FIRSTLIGHT HYDRO GENERATING COMPANY  
 Northfield Mountain Pumped Storage Project No. 2485  
 Turners Falls Hydroelectric Project No. 1889  
 RELICENSING STUDY 3.3.1



Tessellated Darter-Juvenile-Adult  
 Cabot Flow: 4500 cfs  
 Bypass Flow: 200 cfs  
 Deerfield Flow: 200 cfs

Copyright © 2017 FirstLight Power Resources All rights reserved.



Service Layer Credits: Source: Esri, DigitalGlobe, GeoEye, Earthstar Geographics, CNES/Airbus DS, USDA, USGS, AeroGRID, IGN, and the GIS User Community

**Legend**

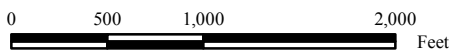
- Reach Extent

**Combined Suitability Index**

- 0.75 - 1
- 0.5 - 0.75
- 0.25 - 0.5
- 0 - 0.25
- 0

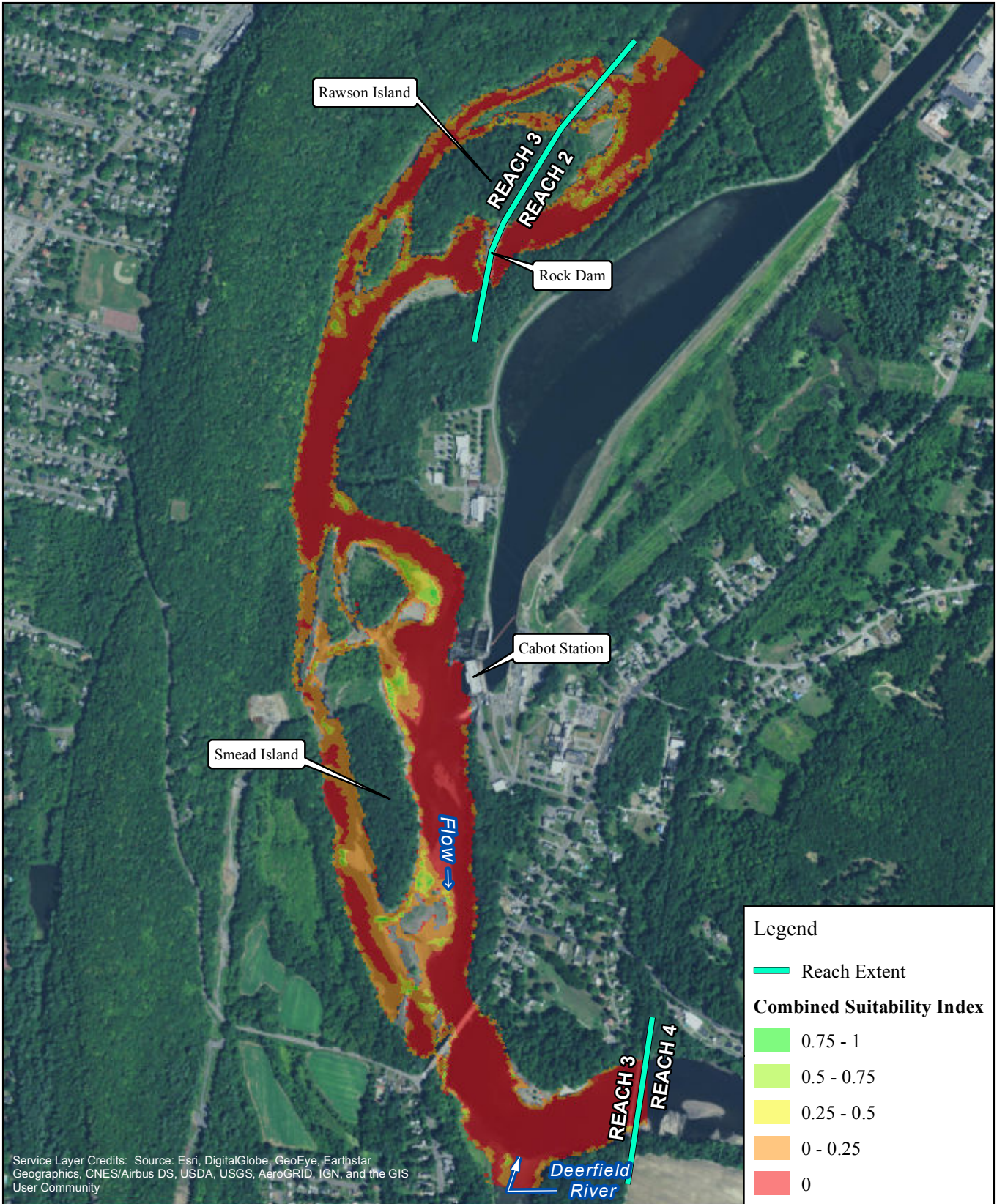


FIRSTLIGHT HYDRO GENERATING COMPANY  
 Northfield Mountain Pumped Storage Project No. 2485  
 Turners Falls Hydroelectric Project No. 1889  
**RELICENSING STUDY 3.3.1**

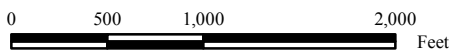


**Tessellated Darter-Juvenile-Adult**  
 Cabot Flow: 4500 cfs  
 Bypass Flow: 500 cfs  
 Deerfield Flow: 200 cfs

Copyright © 2017 FirstLight Power Resources All rights reserved.

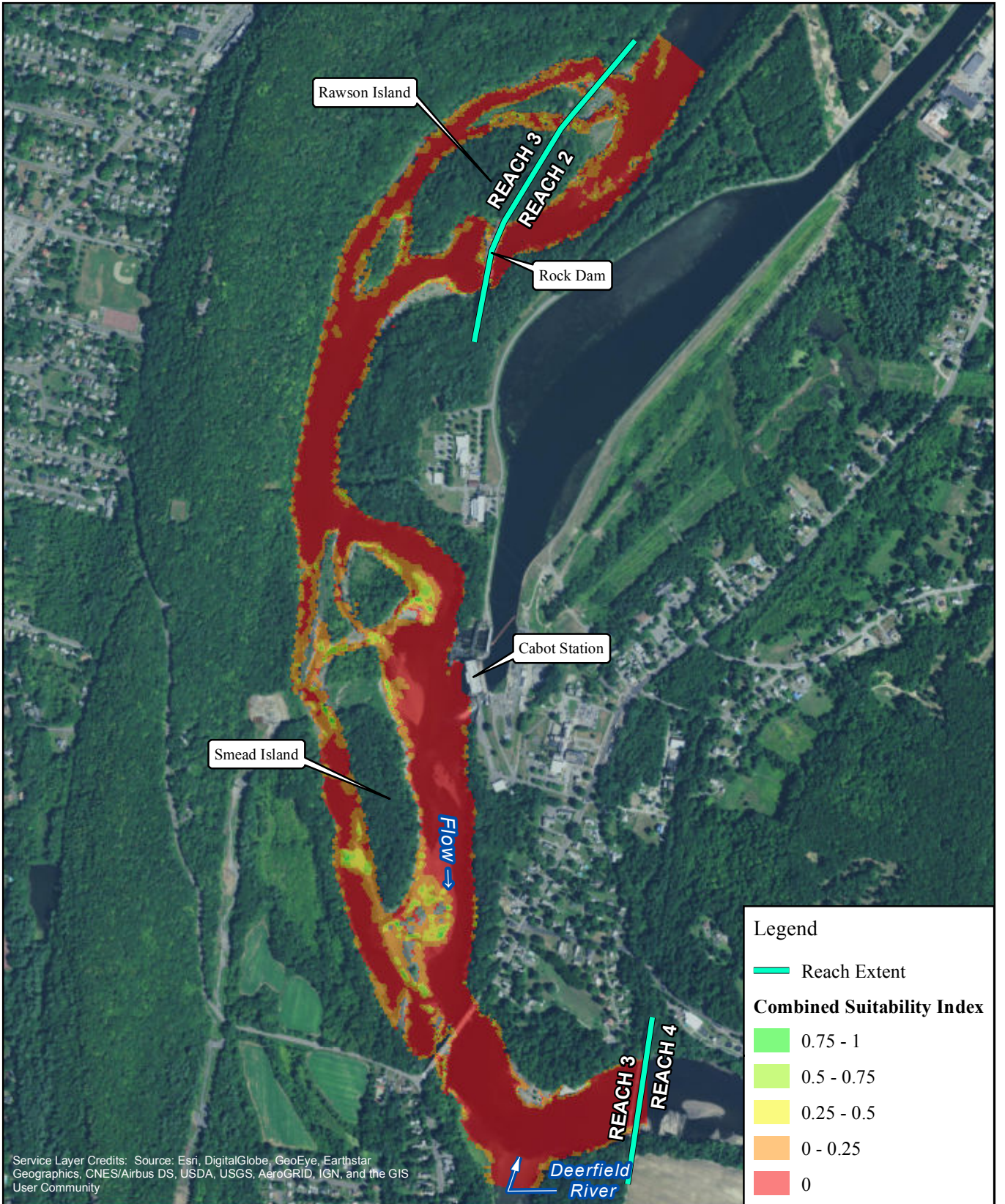


FIRSTLIGHT HYDRO GENERATING COMPANY  
 Northfield Mountain Pumped Storage Project No. 2485  
 Turners Falls Hydroelectric Project No. 1889  
 RELICENSING STUDY 3.3.1



Tessellated Darter-Juvenile-Adult  
 Cabot Flow: 4500 cfs  
 Bypass Flow: 1000 cfs  
 Deerfield Flow: 200 cfs

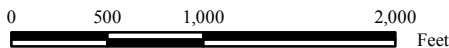
Copyright © 2017 FirstLight Power Resources All rights reserved.



Service Layer Credits: Source: Esri, DigitalGlobe, GeoEye, Earthstar Geographics, CNES/Airbus DS, USDA, USGS, AeroGRID, IGN, and the GIS User Community



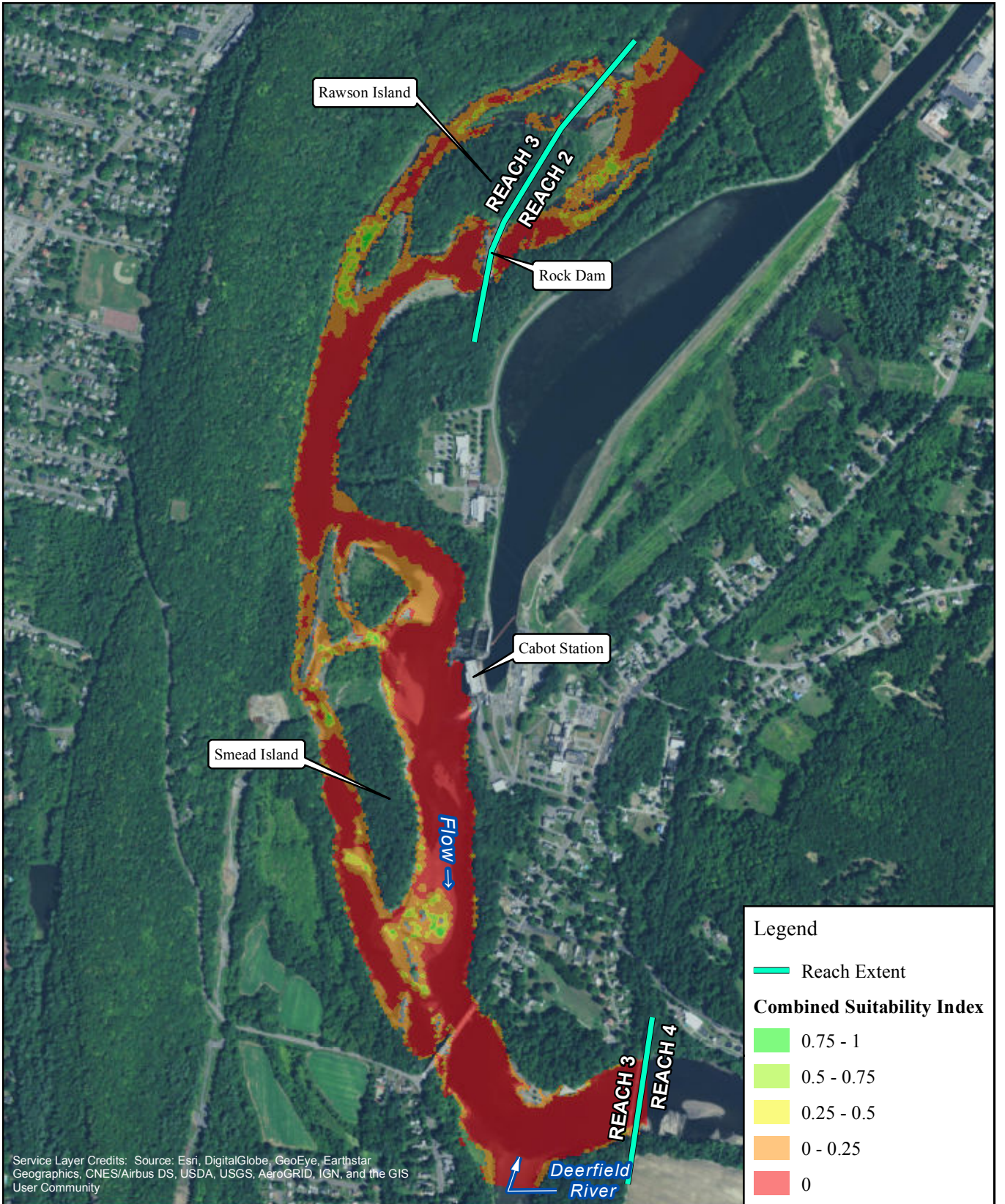
FIRSTLIGHT HYDRO GENERATING COMPANY  
 Northfield Mountain Pumped Storage Project No. 2485  
 Turners Falls Hydroelectric Project No. 1889  
 RELICENSING STUDY 3.3.1



Tessellated Darter-Juvenile-Adult  
 Cabot Flow: 4500 cfs  
 Bypass Flow: 2000 cfs  
 Deerfield Flow: 200 cfs

Copyright © 2017 FirstLight Power Resources All rights reserved.

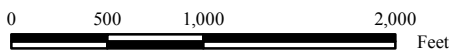




Service Layer Credits: Source: Esri, DigitalGlobe, GeoEye, Earthstar Geographics, CNES/Airbus DS, USDA, USGS, AeroGRID, IGN, and the GIS User Community

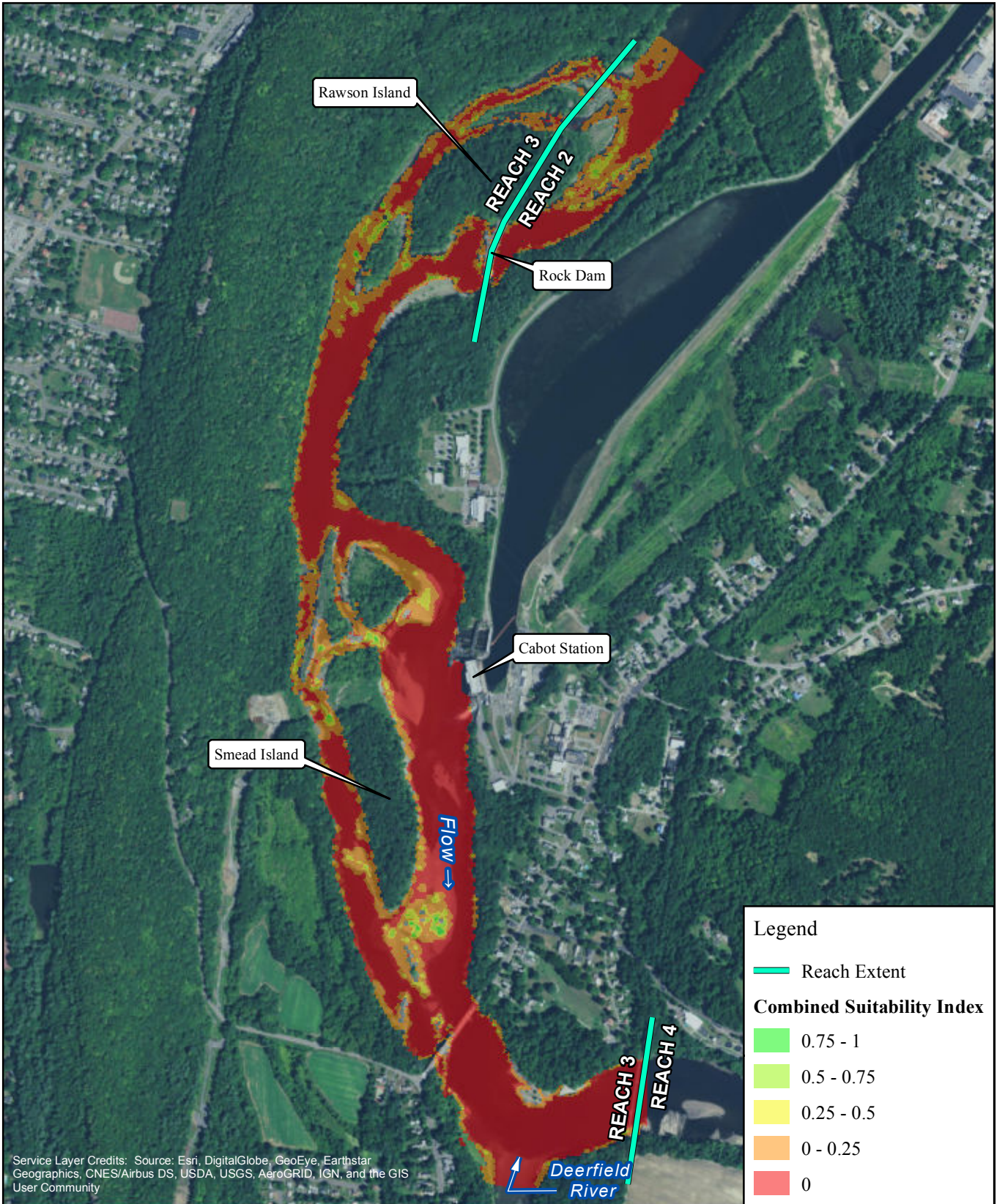


FIRSTLIGHT HYDRO GENERATING COMPANY  
 Northfield Mountain Pumped Storage Project No. 2485  
 Turners Falls Hydroelectric Project No. 1889  
 RELICENSING STUDY 3.3.1



Tessellated Darter-Juvenile-Adult  
 Cabot Flow: 7000 cfs  
 Bypass Flow: 200 cfs  
 Deerfield Flow: 200 cfs

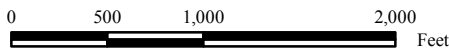
Copyright © 2017 FirstLight Power Resources All rights reserved.



Service Layer Credits: Source: Esri, DigitalGlobe, GeoEye, Earthstar Geographics, CNES/Airbus DS, USDA, USGS, AeroGRID, IGN, and the GIS User Community

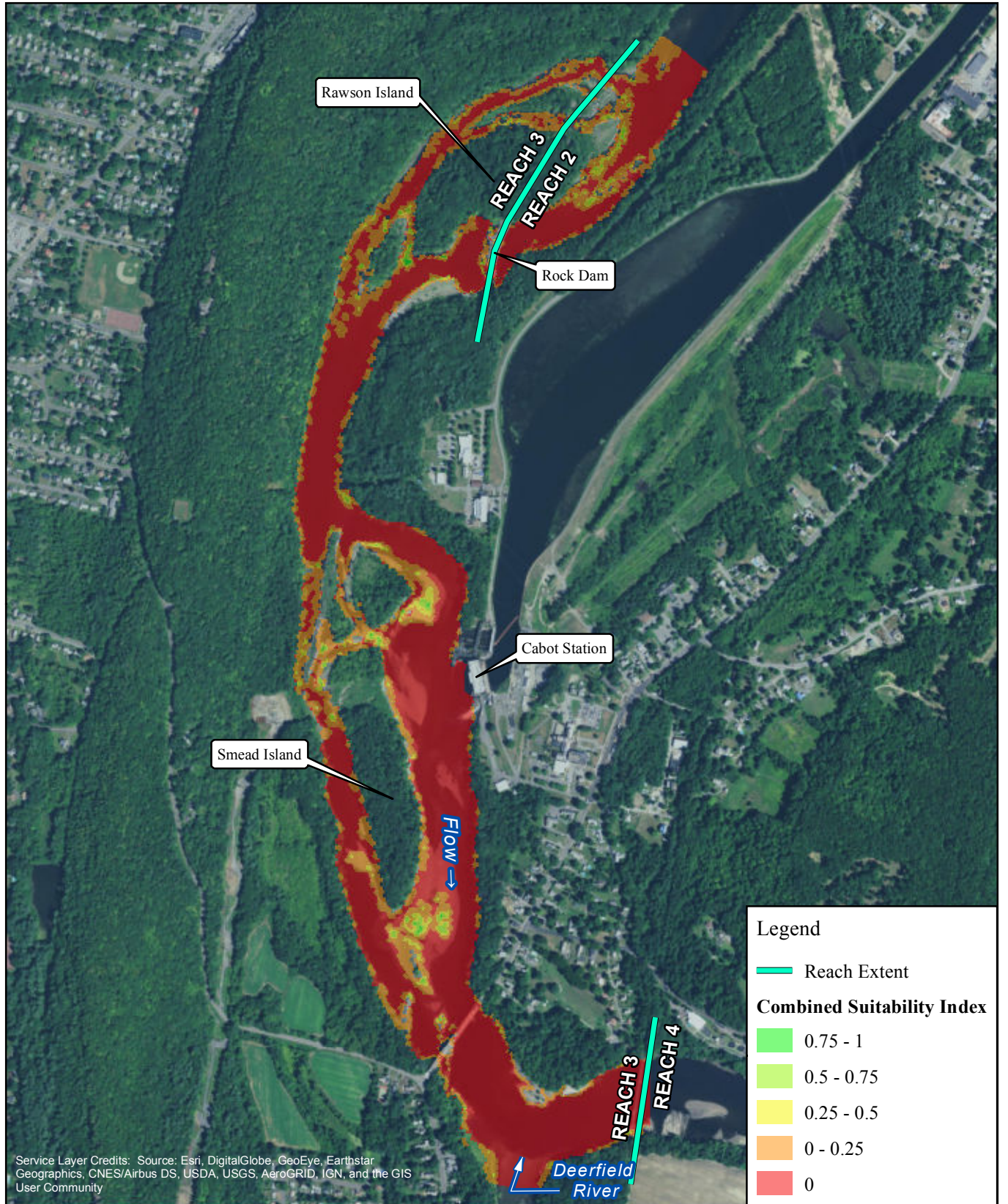


FIRSTLIGHT HYDRO GENERATING COMPANY  
 Northfield Mountain Pumped Storage Project No. 2485  
 Turners Falls Hydroelectric Project No. 1889  
 RELICENSING STUDY 3.3.1



Tessellated Darter-Juvenile-Adult  
 Cabot Flow: 7000 cfs  
 Bypass Flow: 500 cfs  
 Deerfield Flow: 200 cfs

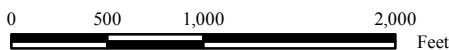
Copyright © 2017 FirstLight Power Resources All rights reserved.



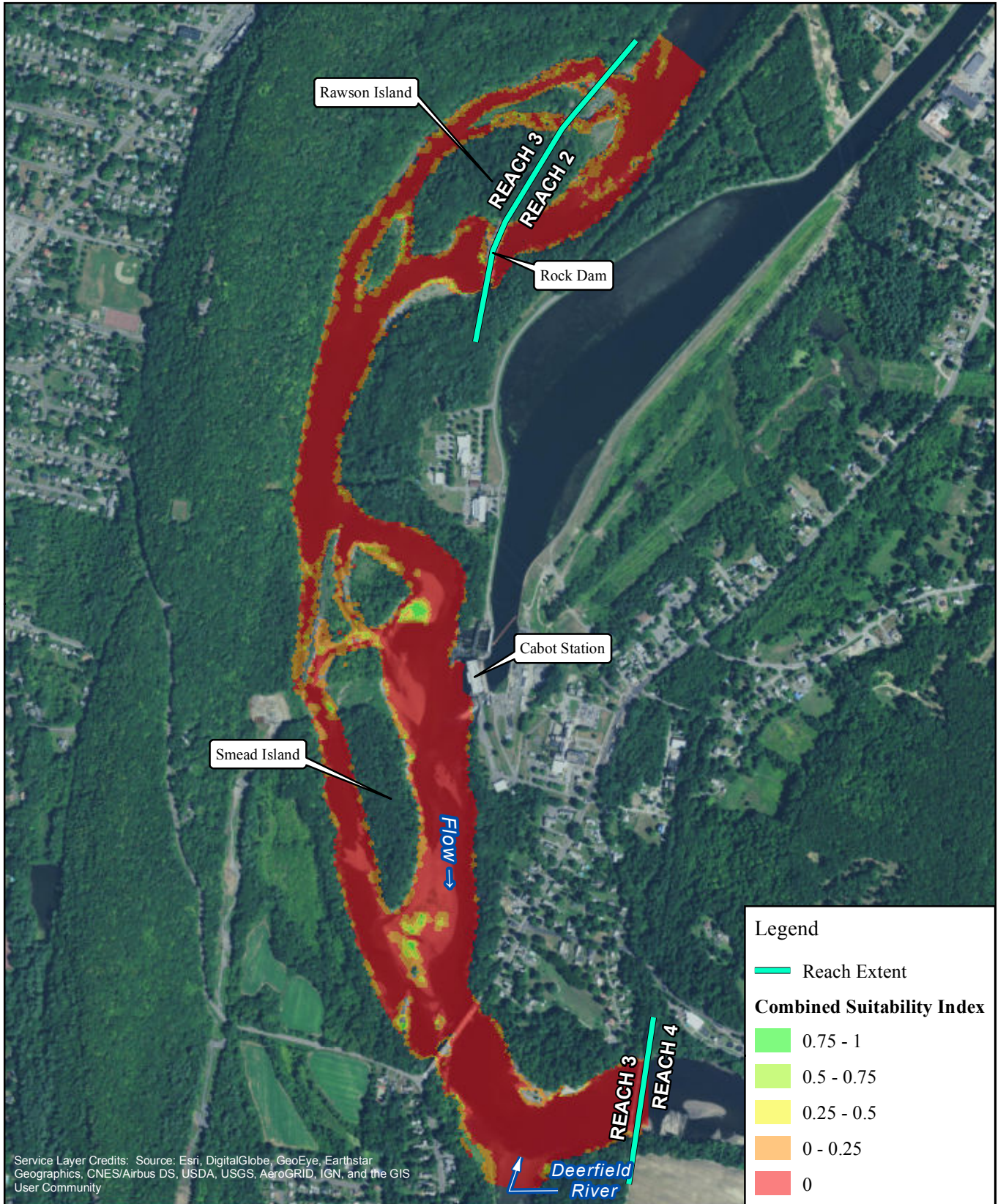
Service Layer Credits: Source: Esri, DigitalGlobe, GeoEye, Earthstar Geographics, CNES/Airbus DS, USDA, USGS, AeroGRID, IGN, and the GIS User Community

FIRSTLIGHT HYDRO GENERATING COMPANY  
 Northfield Mountain Pumped Storage Project No. 2485  
 Turners Falls Hydroelectric Project No. 1889  
 RELICENSING STUDY 3.3.1

Tessellated Darter-Juvenile-Adult  
 Cabot Flow: 7000 cfs  
 Bypass Flow: 1000 cfs  
 Deerfield Flow: 200 cfs



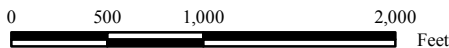
Copyright © 2017 FirstLight Power Resources All rights reserved.



Service Layer Credits: Source: Esri, DigitalGlobe, GeoEye, Earthstar Geographics, CNES/Airbus DS, USDA, USGS, AeroGRID, IGN, and the GIS User Community

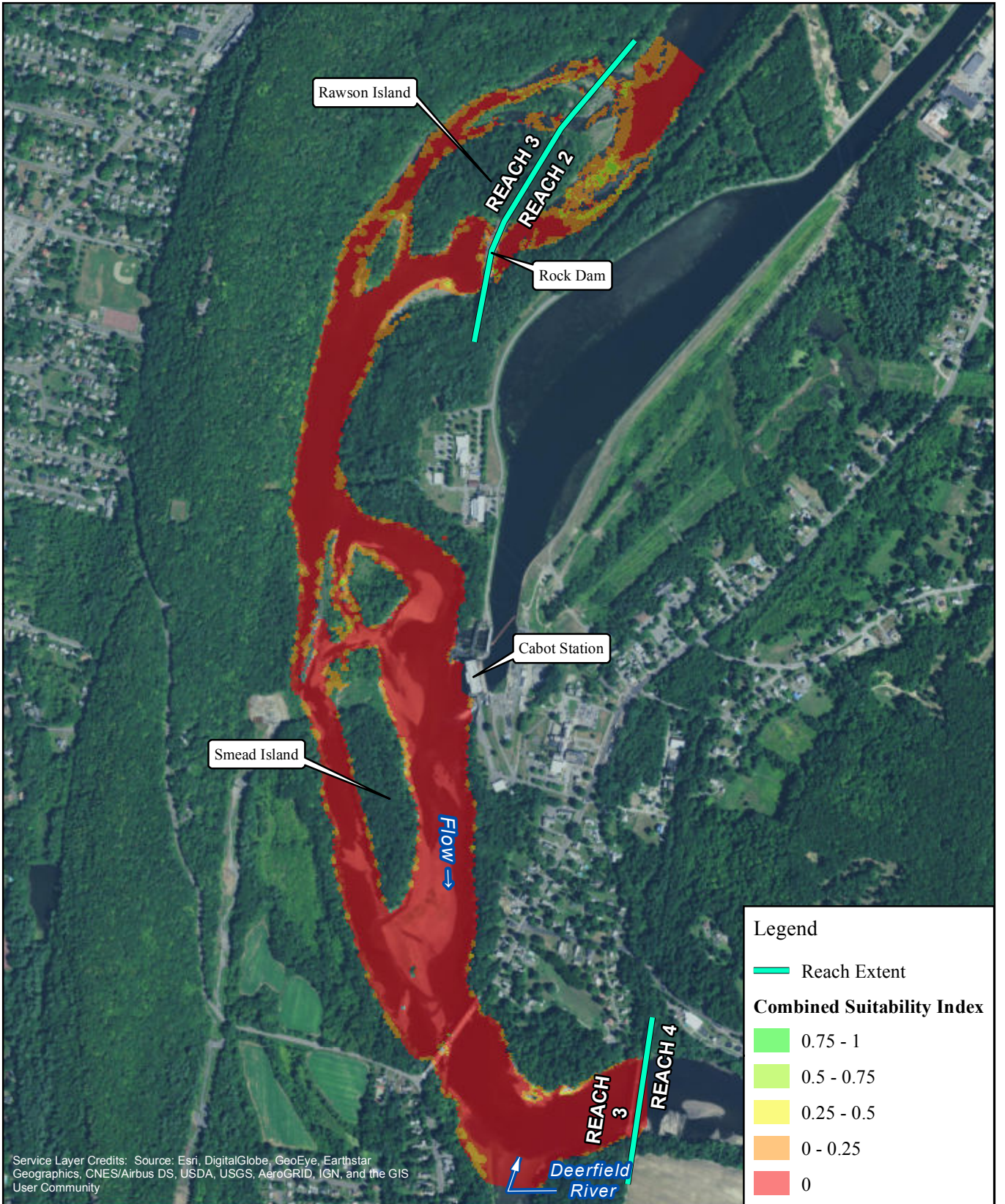


FIRSTLIGHT HYDRO GENERATING COMPANY  
 Northfield Mountain Pumped Storage Project No. 2485  
 Turners Falls Hydroelectric Project No. 1889  
 RELICENSING STUDY 3.3.1



Tessellated Darter-Juvenile-Adult  
 Cabot Flow: 7000 cfs  
 Bypass Flow: 2000 cfs  
 Deerfield Flow: 200 cfs

Copyright © 2017 FirstLight Power Resources All rights reserved.



Service Layer Credits: Source: Esri, DigitalGlobe, GeoEye, Earthstar Geographics, CNES/Airbus DS, USDA, USGS, AeroGRID, IGN, and the GIS User Community

**Legend**

- Reach Extent

**Combined Suitability Index**

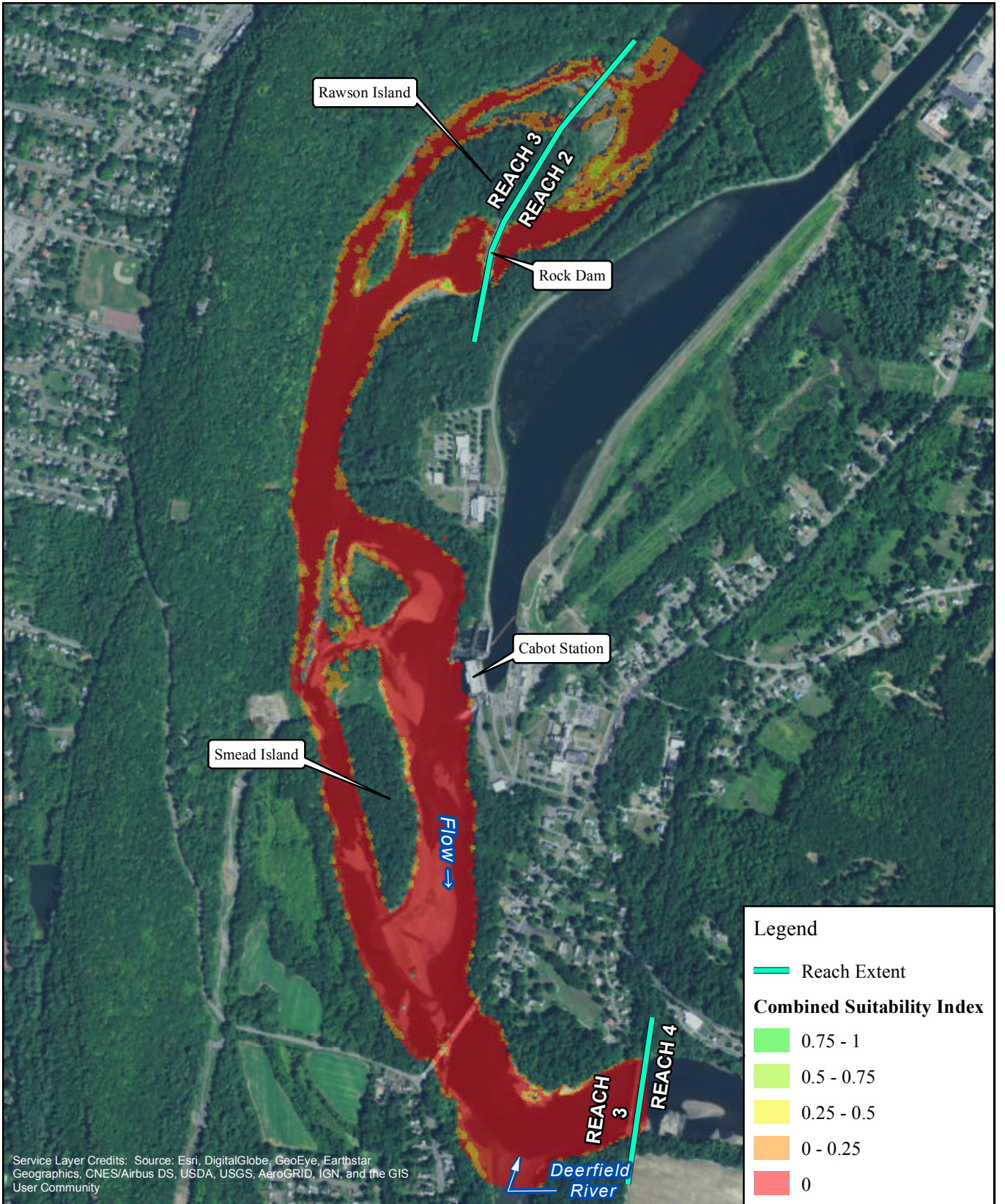
- 0.75 - 1
- 0.5 - 0.75
- 0.25 - 0.5
- 0 - 0.25
- 0

FIRSTLIGHT HYDRO GENERATING COMPANY  
 Northfield Mountain Pumped Storage Project No. 2485  
 Turners Falls Hydroelectric Project No. 1889  
**RELICENSING STUDY 3.3.1**

**Tessellated Darter-Juvenile-Adult**  
 Cabot Flow: 14000 cfs  
 Bypass Flow: 200 cfs  
 Deerfield Flow: 200 cfs

0 500 1,000 2,000 Feet

Copyright © 2017 FirstLight Power Resources All rights reserved.




Service Layer Credits: Source: Esri, DigitalGlobe, GeoEye, Earthstar Geographics, CNES/Airbus DS, USDA, USGS, AeroGRID, IGN, and the GIS User Community

**Legend**

- Reach Extent

**Combined Suitability Index**

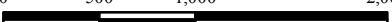
- 0.75 - 1
- 0.5 - 0.75
- 0.25 - 0.5
- 0 - 0.25
- 0



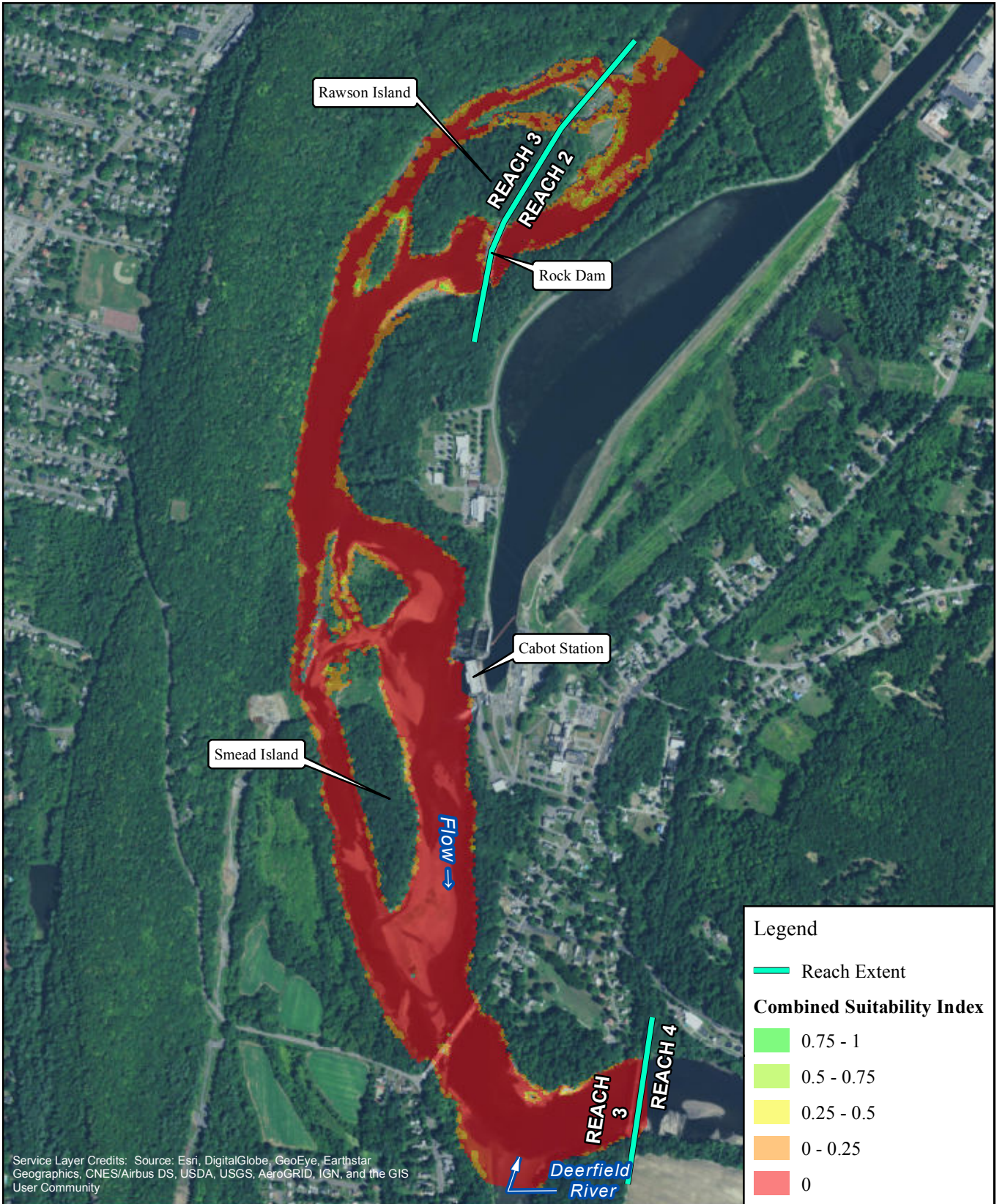
**FIRSTLIGHT HYDRO GENERATING COMPANY**  
 Northfield Mountain Pumped Storage Project No. 2485  
 Turners Falls Hydroelectric Project No. 1889  
**RELICENSING STUDY 3.3.1**

**Tessellated Darter-Juvenile-Adult**  
 Cabot Flow: 14000 cfs  
 Bypass Flow: 500 cfs  
 Deerfield Flow: 200 cfs

0 500 1,000 2,000 Feet



Copyright © 2017 FirstLight Power Resources All rights reserved.



Service Layer Credits: Source: Esri, DigitalGlobe, GeoEye, Earthstar Geographics, CNES/Airbus DS, USDA, USGS, AeroGRID, IGN, and the GIS User Community

**Legend**

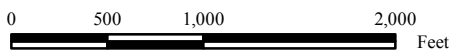
- Reach Extent

**Combined Suitability Index**

- 0.75 - 1
- 0.5 - 0.75
- 0.25 - 0.5
- 0 - 0.25
- 0

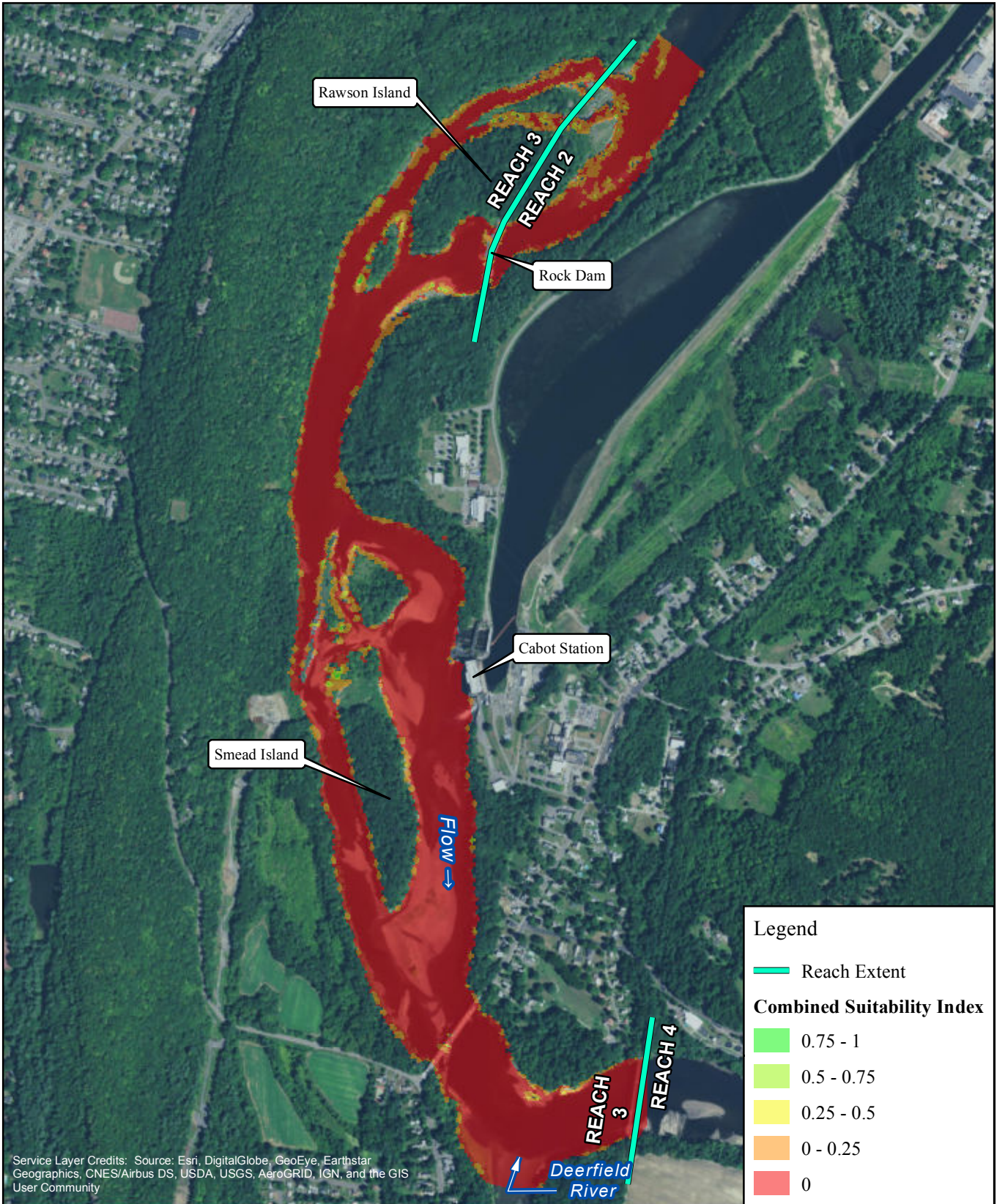


FIRSTLIGHT HYDRO GENERATING COMPANY  
 Northfield Mountain Pumped Storage Project No. 2485  
 Turners Falls Hydroelectric Project No. 1889  
**RELICENSING STUDY 3.3.1**

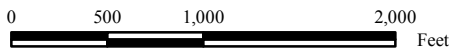


**Tessellated Darter-Juvenile-Adult**  
 Cabot Flow: 14000 cfs  
 Bypass Flow: 1000 cfs  
 Deerfield Flow: 200 cfs

Copyright © 2017 FirstLight Power Resources All rights reserved.



FIRSTLIGHT HYDRO GENERATING COMPANY  
 Northfield Mountain Pumped Storage Project No. 2485  
 Turners Falls Hydroelectric Project No. 1889  
 RELICENSING STUDY 3.3.1



Tessellated Darter-Juvenile-Adult  
 Cabot Flow: 14000 cfs  
 Bypass Flow: 2000 cfs  
 Deerfield Flow: 200 cfs

Copyright © 2017 FirstLight Power Resources All rights reserved.